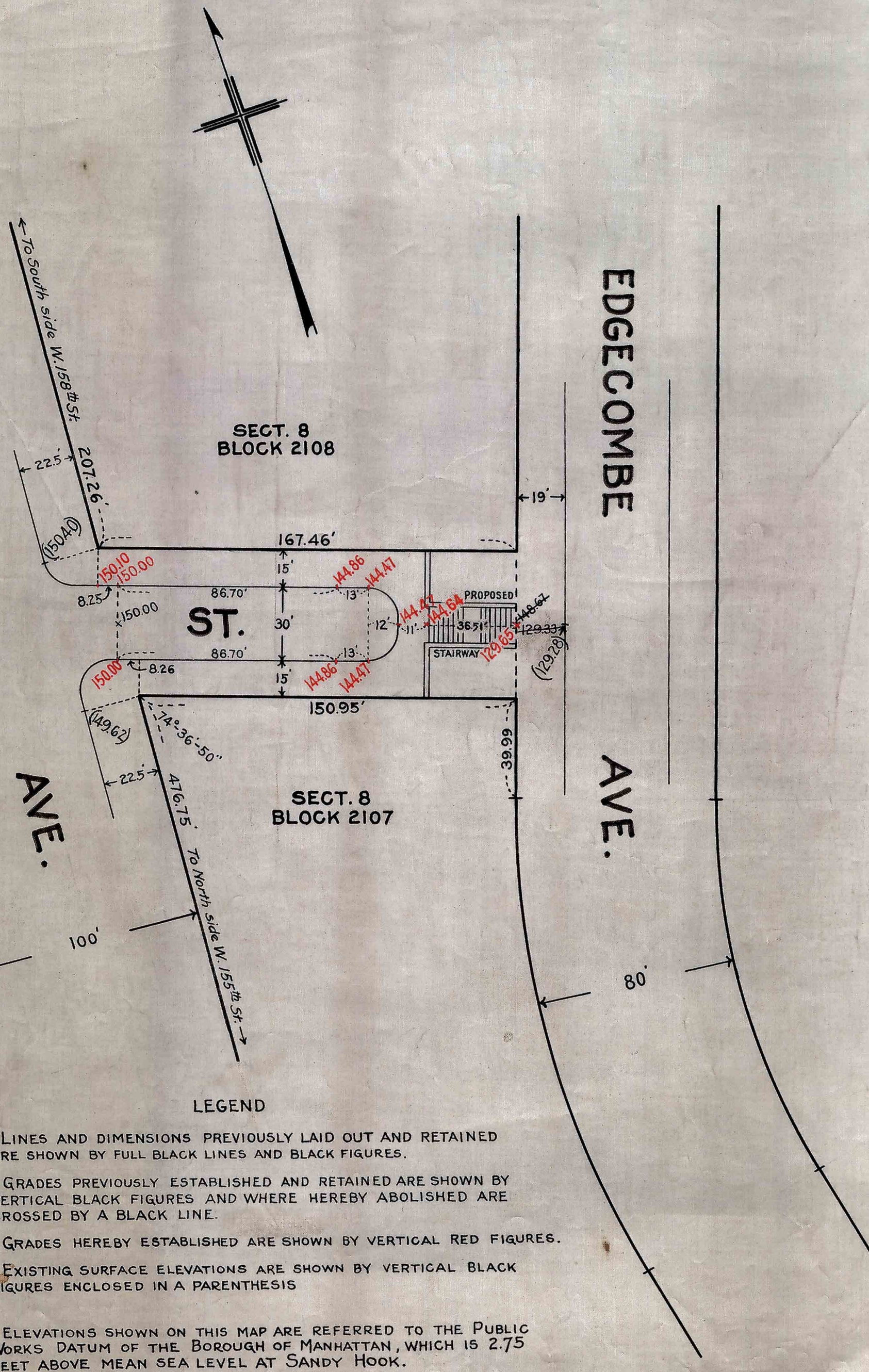


ST. NICHOLAS
W. 157TH



LEGEND

Lines and dimensions previously laid out and retained are shown by full black lines and black figures.

Grades previously established and retained are shown by vertical black figures and where hereby abolished are crossed by a black line.

Grades hereby established are shown by vertical red figures.

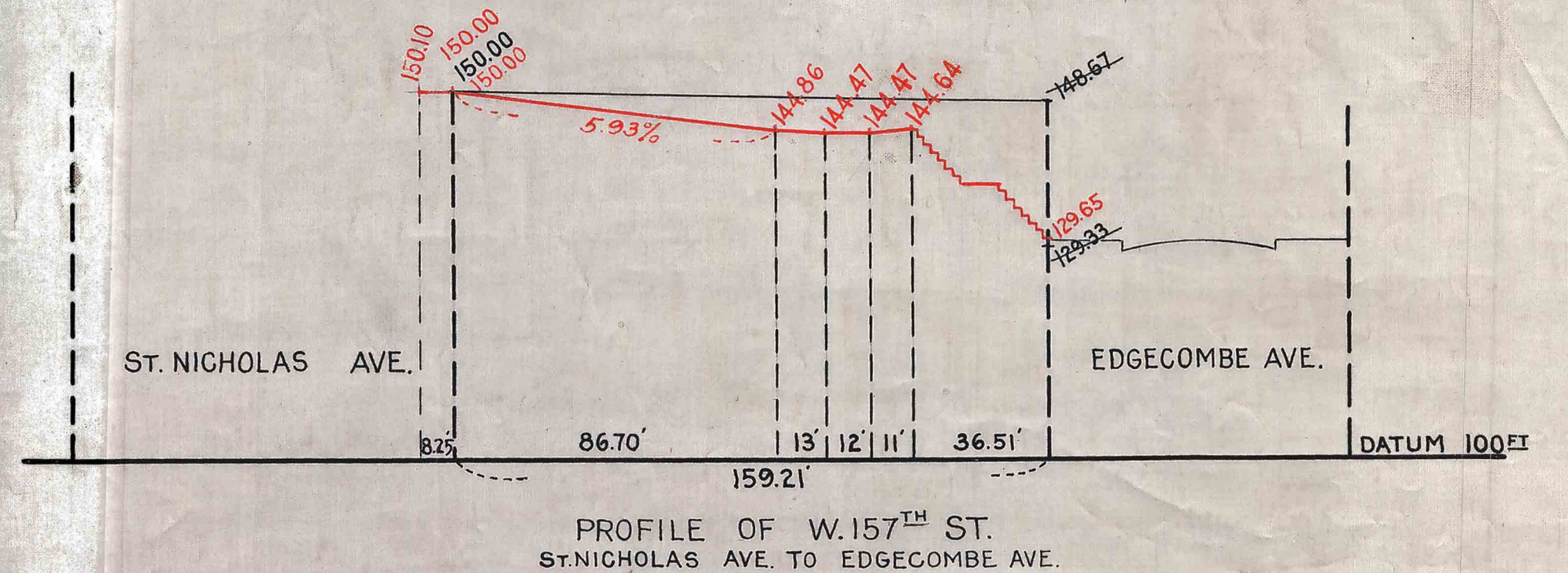
Existing surface elevations are shown by vertical black figures enclosed in a parenthesis.

Elevations shown on this map are referred to the Public Works Datum of the Borough of Manhattan, which is 2.75 feet above mean sea level at Sandy Hook.

DRAWN BY W. MOFFATT
CHECKED BY A. V. PACT
ENGINEER OF DESIGN

EDGECOMBE

AVE.



I, James Matthews, ASSISTANT SECRETARY OF THE BOARD OF ESTIMATE AND APPORTIONMENT OF THE CITY OF NEW YORK, DO HEREBY CERTIFY THAT THIS MAP IS ONE OF THREE SIMILAR MAPS MADE AT THE DIRECTION OF, AND ADOPTED BY, THE SAID BOARD OF ESTIMATE AND APPORTIONMENT ON THE 28TH DAY OF APRIL, 1922, AND APPROVED BY THE MAYOR ON THE 9TH DAY OF MAY, 1922, SUPERSEDING ALL MAPS HERETOFORE FILED AFFECTING THE AREA EMBRACED BY SAID MAP IN SO FAR AS IT MAKES ANY CHANGES THEREIN. PREPARED FOR THE BOARD OF ESTIMATE AND APPORTIONMENT UNDER AUTHORITY OF THE CHARTER OF THE CITY OF NEW YORK. DATED, NEW YORK, JUNE 8, 1922. James Matthews, ASSISTANT SECRETARY, BOARD OF ESTIMATE AND APPORTIONMENT.

CITY OF NEW YORK BOROUGH OF MANHATTAN
OFFICE OF THE PRESIDENT
DEPARTMENT OF PUBLIC WORKS
BUREAU OF ENGINEERING

MAP SHOWING A CHANGE OF GRADE ON
WEST 157TH STREET
BETWEEN
ST. NICHOLAS AVE. AND EDGECOMBE AVE.

DATED FEB. 6, 1922

SCALE (VERT. 1"=20'
HOR. 1"=40')

Chief Engineer

President Boro. of Manhattan

File 15.2

No. 24476

Rec'd for Filing
6-13-1922 J. A. Bidermann