[illegible]

I, LESTER J. MORGAN SECRETARY OF THE BOARD OF DIRECTORS, HEREBY CERTIFY THAT THE FOLLOWING IS A TRUE AND CORRECT COPY OF THE BY-LAWS OF THE BOARD OF DIRECTORS OF THE NEW YORK STATE BOARD OF EXHIBITION, AS AMENDED TO DATE OF SEPTEMBER 11, 1932 AND APPROVED BY THE BOARD ON THE DAY OF SEPTEMBER, 1932.
WITNESSED my hand and the seal of said Board at the City of ALBANY, New York, this 11th day of SEPTEMBER, 1932.
LESTER J. MORGAN SECRETARY
NEW YORK STATE BOARD OF EXHIBITION
ALBANY, N. Y.
October 27, 1932
NEW YORK STATE BOARD OF EXHIBITION
ALBANY, N. Y.

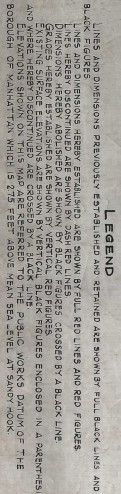
CITY OF NEW YORK BOROUGH OF MANHATTAN
OFFICE OF THE PRESIDENT
DEPARTMENT OF PUBLIC WORKS
BUREAU OF ENGINEERING

MAP SHOWING A CHANGE IN THE CITY PLAN BY LAYING OUT A
WIDENING

WEST HOUSTON STREET
SIXTH AVENUE AND BROADWAY
EAST HOUSTON STREET
BROADWAY AND ESSEX STREET
ESSEX STREET
ON THE EASTERLY SIDE BETWEEN
EAST HOUSTON STREET AND CANAL STREET
RUTGERS STREET
ON THE EASTERLY SIDE BETWEEN
STRAUS SQUARE AND CHERRY STREET
BY DISCONTINUING
THE WIDENING AND EXTENSION OF ESSEX STREET
ON THE WESTERLY SIDE BETWEEN
EAST BROADWAY AND EAST HOUSTON STREET

CARD NO. 931
SCALE 1:40
William H. Dyer
PRESIDENT SOCIETY OF NATALIA
CHIEF ENGINEER

J. C. Collier
ENGINEER OF DESIGN



BLACK DOT AND DASH LINE INDICATES THE LIMITS OF PROPERTY ACQUIRED IN FEE BY THE CITY OF NEW YORK (PRECEDING NO. 5) FOR A RAPID TRANSIT SUBWAY AS SHOWN ON THE BOARD OF TRANSPORTATION DRAWING NO. 76 - "E" - NO. 60 (SHEETS 1 TO 5 INCLUSIVE) DATED JUNE 24, 1930 AND APPROVED BY THE COMMISSIONERS OF THE BOARD OF TRANSPORTATION ON JUNE 24, 1930.

SECRETARY OF THE BOARD OF ESTIMATE
AND APPOINTMENT OF THE CITY OF NEW YORK DO HEREBY
CERTIFY THAT THE MAP IS ONE OF THREE SIMILAR MAPS
THE DIRECTION OF AND ADOPTED BY THE SAID BOARD
OF APPOINTMENT ON THE
DATE OF THE FOREGOING SUBMISSION ALL MAPS HEREBY
CERTIFIED TO BE TRUE AND CORRECT AND THAT THE
CHANGES THEREAFTER BY SAID BOARD IS IN FULL
SATISFACTION OF THE CHARGES OF THE CITY OF NEW YORK
NEW YORK October 27 1932.

SECRETARY

CITY OF NEW YORK BOOROUGH OF MANHATTAN
OFFICE OF THE PRESIDENT
DEPARTMENT OF PUBLIC WORKS
BUREAU OF ENGINEERING

MAP SHOWING A CHANGE IN THE CITY PLAN BY LAYING OUT A
WIDENING

WEST HOUSTON STREET
BETWEEN
SIXTH AVENUE AND BROADWAY
EAST HOUSTON STREET
BETWEEN
BROADWAY AND ESSEX STREET
ESSEX STREET
ON THE EASTERN SIDE BETWEEN
EAST HOUSTON STREET AND CANAL STREET
RUTGERS STREET
ON THE EASTERN SIDE BETWEEN
STRAUS SQUARE AND CHERRY STREET
BY DISCONTINUING
THE WIDENING AND EXTENSION OF ESSEX STREET
ON THE EASTERN SIDE BETWEEN
EAST HOUSTON STREET AND EAST HOUSTON STREET

DATED: MAY 7, 1931.

SCALE: 1" = 4'-0"

[illegible]

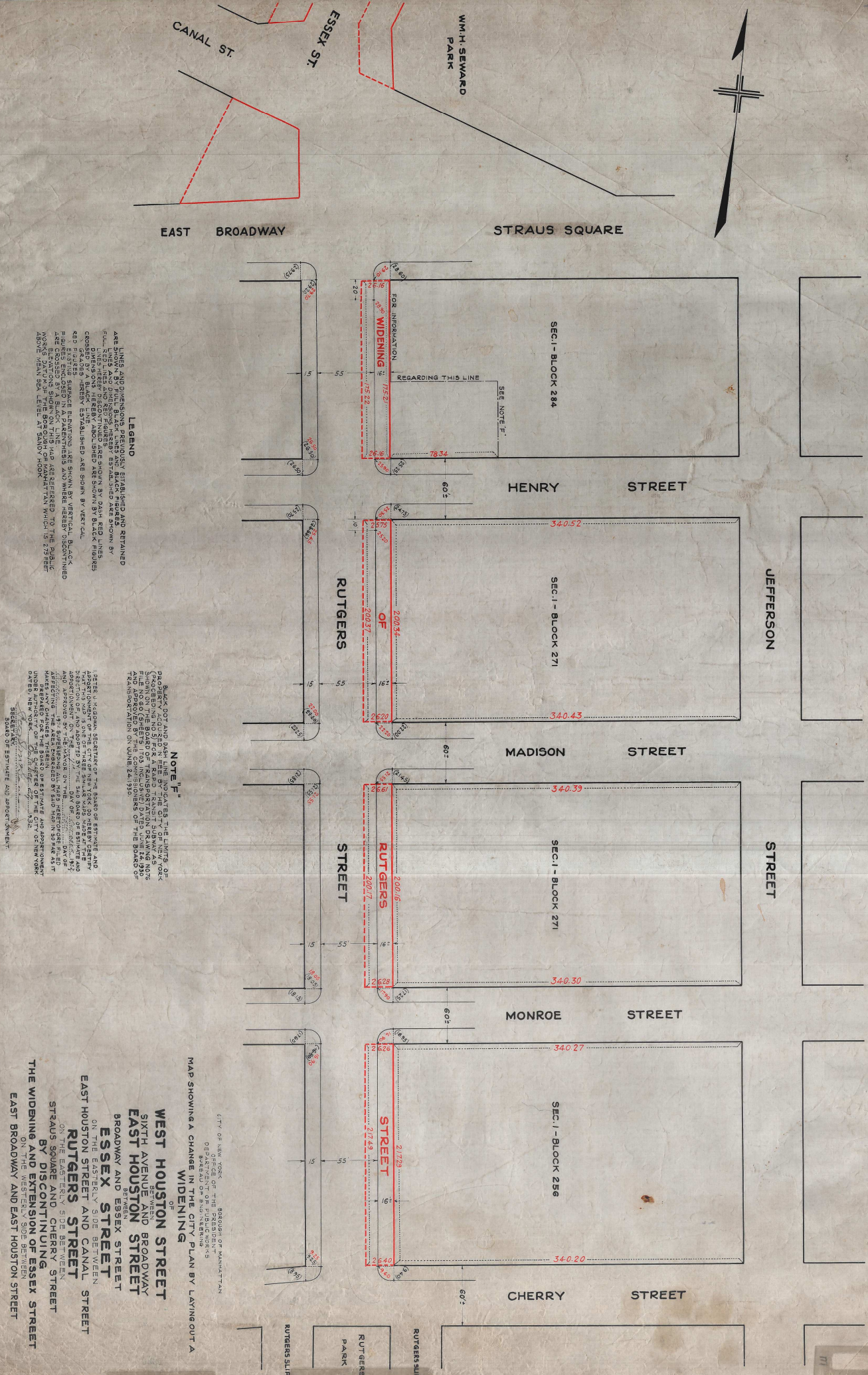
PRESIDENT BOBO OF MANHATTAN

DRAWN BY: M GOLDER
CHECKED BY: R BENNETT
Billiam
ACTING SECTION ENGINEER

J. C. Collier
ENGINEER OF DESIGN.

○工市町 田口 敬之助 氏

William D. Howland
PRESIDENT BOARD OF MANAGERS

[illegible]