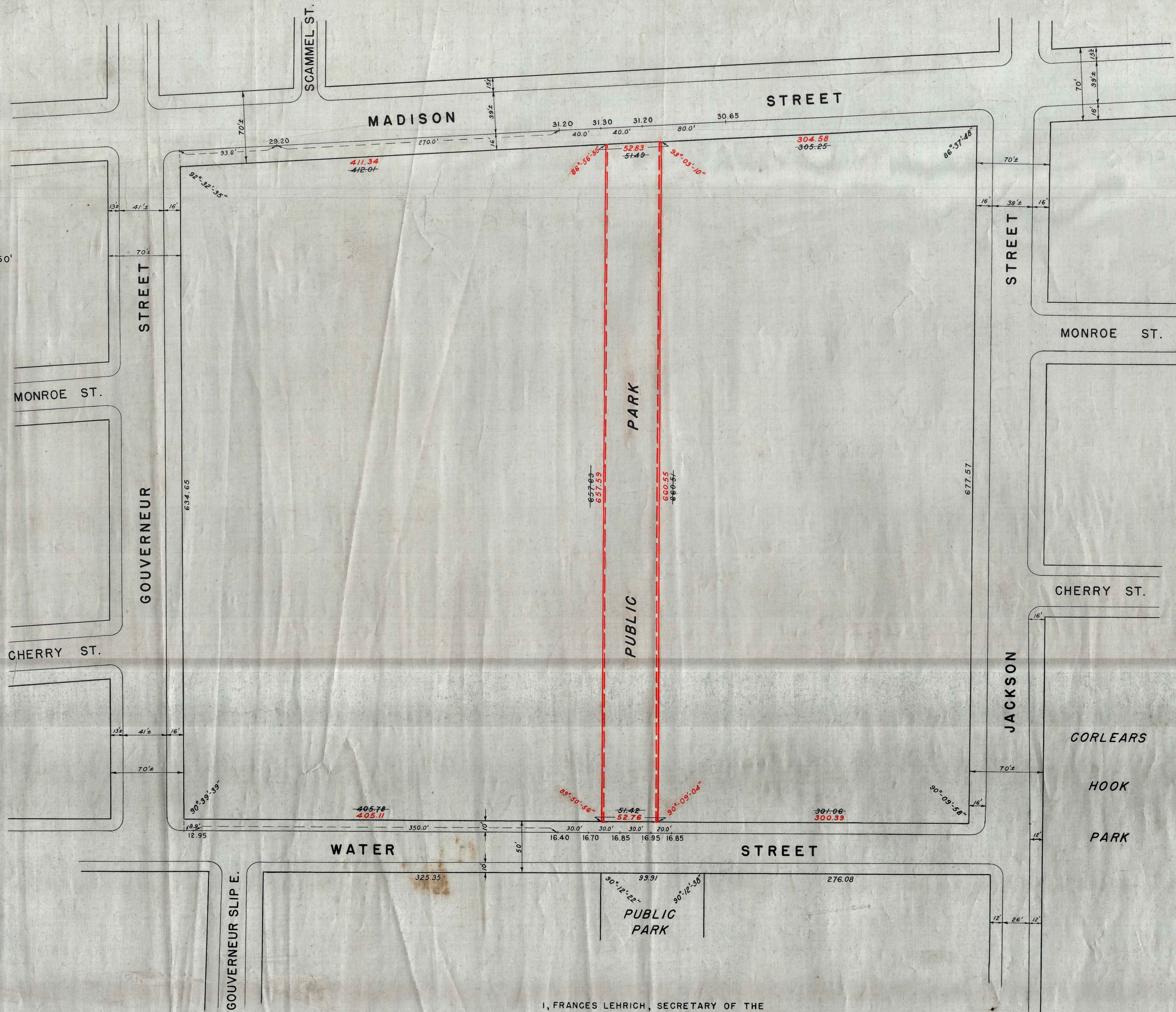


SCALE: 1" = 50'



LEGEND

Lines and dimensions previously established and hereby retained are shown by full black lines and black figures.  
Lines and dimensions hereby established are shown by full red lines and red figures.  
Lines previously established and hereby super-seeded are shown by dashed red lines.  
Grades previously established and hereby retained are shown by vertical black figures.  
Dimensions hereby discontinued are shown by black figures crossed by a black line.  
Elevations shown on this map are for top of curb, and are referred to the borough works datum of the borough of Manhattan which is 2.750 feet above mean sea level at Sandy Hook.

I, FRANCES LEHRICH, SECRETARY OF THE BOARD OF ESTIMATE OF THE CITY OF NEW YORK DO HEREBY CERTIFY THAT THIS MAP IS ONE OF FOUR SIMILAR MAPS ADOPTED BY THE SAID BOARD OF ESTIMATE ON THE 26<sup>TH</sup> DAY OF SEPT. 1940.

DATED: NEW YORK November 15, 1940.

*Frances Lehrich*  
SECRETARY BOARD OF ESTIMATE

CITY OF NEW YORK  
OFFICE OF THE PRESIDENT BOROUGH OF MANHATTAN  
DEPARTMENT OF BOROUGH WORKS  
MAP SHOWING A CHANGE IN THE CITY PLAN  
WITHIN THE TERRITORY BOUNDED BY GOUVERNEUR STREET  
MADISON STREET, JACKSON STREET AND WATER STREET  
BY CHANGING THE LOCATION OF  
THE EASTERLY AND WESTERLY LINES OF  
THE PUBLIC PARK THEREIN

DATED: April 22, 1940

*Stephen M. ...*  
PRESIDENT BOROUGH OF MANHATTAN

DRAWN BY: L. M. Attinson  
CHECKED BY: W. M.  
*L. M. Attinson*  
SECTION ENGINEER  
*W. M.*  
ENGINEER OF DESIGN

*John ...*  
CHIEF ENGINEER  
*Walter ...*  
COMMISSIONER OF BOROUGH WORKS