

WEST END AVE.

SEC. 4 BL. 1154

WEST 64TH ST.

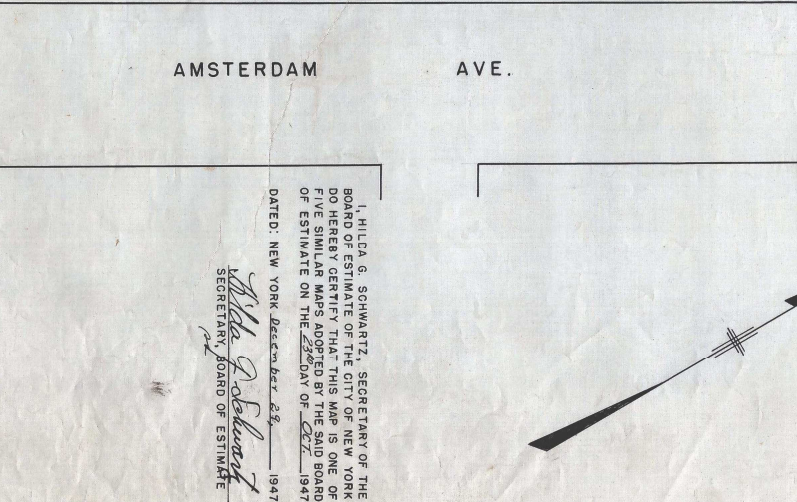
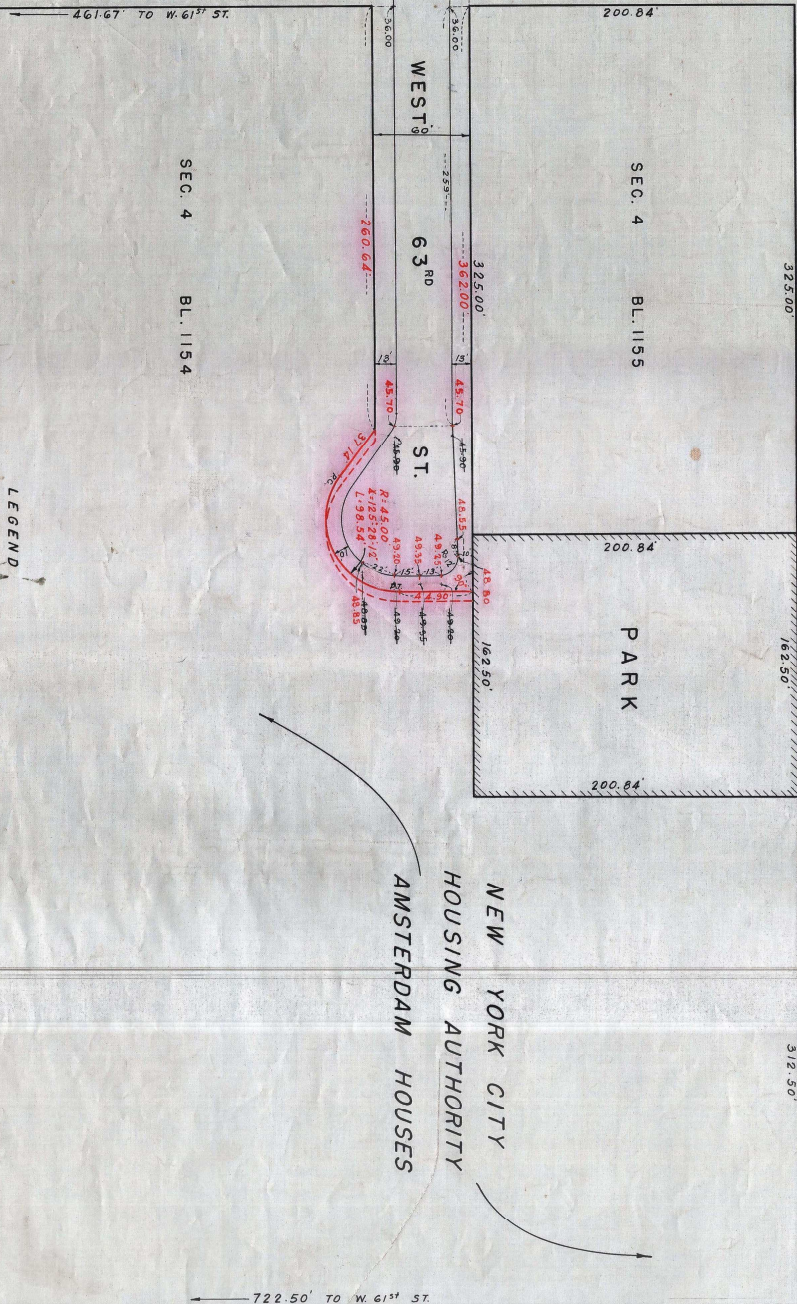
SEC. 4 BL. 1155

PARK

WEST 63RD ST.

NEW YORK CITY
HOUSING AUTHORITY
AMSTERDAM HOUSES

AMSTERDAM AVE.



DRAWN BY E.K.
CHECKED BY N.Y.

EX-108
SECTION ENGINEER
Acting ENGINEER OF DESIGN

LEGEND
LINES AND DIMENSIONS PREVIOUSLY ESTABLISHED AND HEREBY RETAINED ARE SHOWN BY FULL BLACK LINES AND BLACK FIGURES.
LINES AND DIMENSIONS HEREBY ESTABLISHED ARE SHOWN BY FULL RED LINES AND RED FIGURES.
LINES PREVIOUSLY ESTABLISHED AND HEREBY DISCONTINUED ARE SHOWN BY DASHED RED LINES.
PARK PREVIOUSLY ESTABLISHED SHOWN THUS [PARK]
ELEVATIONS PREVIOUSLY ESTABLISHED AND HEREBY RETAINED ARE SHOWN BY VERTICAL BLACK FIGURES.
ELEVATIONS PREVIOUSLY ESTABLISHED AND HEREBY ABOLISHED ARE SHOWN BY VERTICAL BLACK FIGURES CROSSED BY A BLACK LINE.
ELEVATIONS HEREBY ESTABLISHED ARE SHOWN BY VERTICAL RED FIGURES.
ELEVATIONS SHOWN ON THIS MAP ARE REFERRED TO THE BOROUGH WORKS DATUM OF THE BOROUGH OF MANHATTAN WHICH IS 2.75 FEET ABOVE MEAN SEA LEVEL AT SANDY HOOK.

MAP SHOWING A CHANGE IN THE STREET SYSTEM
BY CHANGING THE LINES OF A PORTION OF
WEST 63RD STREET
AND ADJUSTING THE GRADES IN CONNECTION THEREWITH
DATED: JULY 7, 1947
SCALE 1" = 50'

CHIEF ENGINEER

CHIEF ENGINEER OF DESIGN

I, HILDA G. SCHWARTZ, SECRETARY OF THE BOARD OF ESTIMATE OF THE CITY OF NEW YORK DO HEREBY CERTIFY THAT THIS MAP IS ONE OF THE MAPS DATED THE 23RD DAY OF JULY 1947 OF ESTIMATE ON THE 23RD DAY OF JULY 1947
DATED: NEW YORK, DECEMBER 28, 1947
Hilda G. Schwartz
SECRETARY, BOARD OF ESTIMATE

City of New York
Office of the President
Department of Borough Works
Borough of Manhattan
Division of Street and Traffic
Section of Street and Traffic
File No. 5-49
Borough of Manhattan
Division of Street and Traffic
Section of Street and Traffic
File No. 5-49

ACC. No. 28868