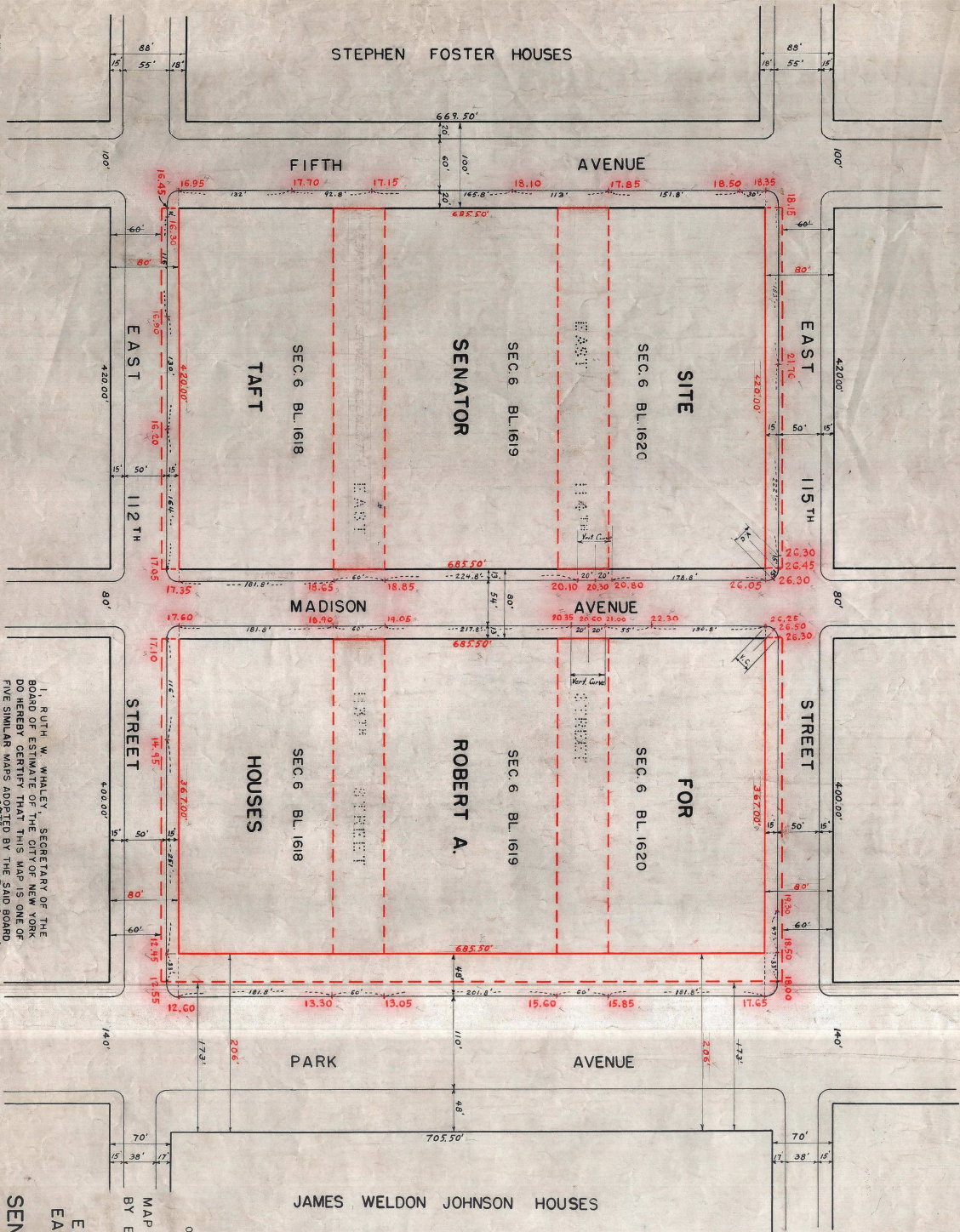


DRAWN BY A.F.H.  
 CHECKED BY E.K.  
 SECTION ENGINEER  
 Edward J. Kent  
 William Smith  
 ENGINEER OF DESIGN

DATED: NEW YORK, NOVEMBER 2, 1956  
 RUTH W. WHALEY, SECRETARY OF THE BOARD OF ESTIMATE OF THE CITY OF NEW YORK  
 DO HEREBY CERTIFY THAT THIS MAP IS ONE OF FIVE SIMILAR MAPS ADOPTED BY THE SAID BOARD OF ESTIMATE ON THE 27th DAY OF SEPTEMBER, 1956  
 SECRETARY BOARD OF ESTIMATE  
 RUTH W. Whaley

OFFICE OF THE PRESIDENT  
 DEPARTMENT OF BOROUGH WORKS  
 MAP SHOWING A CHANGE IN THE STREET SYSTEM BY ELIMINATING AND WIDENING THE STREET LINES AND ESTABLISHING GRADES  
 IN THE AREA BOUNDED BY  
 EAST 112TH STREET, FIFTH AVENUE,  
 EAST 115TH STREET AND PARK AVENUE  
 FOR THE  
 SENATOR ROBERT A. TAFT HOUSES  
 DATED: AUG. 22, 1955  
 Louis A. Costello  
 ACT. PRESIDENT BOROUGH OF MANHATTAN  
 CHEF ENGINEER



**NOTES**  
 LINES AND DIMENSIONS PREVIOUSLY ESTABLISHED AND HEREBY RETAINED ARE SHOWN BY FULL BLACK LINES AND BLACK FIGURES.  
 LINES AND DIMENSIONS HEREBY ESTABLISHED ARE SHOWN BY FULL RED LINES AND RED FIGURES.  
 LINES PREVIOUSLY ESTABLISHED AND HEREBY ELIMINATED ARE SHOWN BY DASHED RED LINES.  
 DIMENSIONS HEREBY DISCONTINUED ARE SHOWN BY BLACK FIGURES CROSSED BY A BLACK LINE.  
 GRADES HEREBY ESTABLISHED ARE SHOWN BY VERTICAL RED FIGURES.  
 ELEVATIONS SHOWN ON THIS MAP ARE AT TOP OF CURB AND ARE REFERRED TO THE BOROUGH WORKS DATUM OF THE BOROUGH OF MANHATTAN WHICH IS 2.75 FEET ABOVE MEAN SEA LEVEL AT SANDY HOOK.  
 ALL CURB CORNERS ARE TURNED BY 12 FOOT RADII EXCEPT WHERE NOTED.

19  
 1956

RECEIVED AS FILED IN OFFICE OF  
 DEPT. OF BOROUGH WORKS  
 10/10/56

ACC. NO. 29446