

TYPICAL SECTION THRU PARK

SCALE 1/4" = 1'-0"

EXACT DETAILS AND SECTIONS WILL VARY PLANS ON
FILE WITH BATTERY PARK CITY AUTHORITY.

NOTES

- 247.17' INDICATES DIMENSION HERETOFORE ESTABLISHED AND HEREBY RETAINED.
- INDICATES STREET LINE OR LINE OF MARGINAL STREET, WHARF OR PLACE HERETOFORE ESTABLISHED AND HEREBY RETAINED
- INDICATES STREET LINE HEREBY ESTABLISHED
- INDICATES STREET LINE HERETOFORE ESTABLISHED AND HEREBY ELIMINATED
- INDICATES SEWER EASEMENT HEREBY ESTABLISHED
- INDICATES ACCESS EASEMENT HEREBY ESTABLISHED
- 22.45' INDICATES DIMENSION HEREBY ESTABLISHED
- 70-00' INDICATES DIMENSION HERETOFORE ESTABLISHED AND HEREBY ELIMINATED
- 9.3' INDICATES ELEVATION HEREBY ESTABLISHED
- 100.5' INDICATES TIE-IN DISTANCES TO ELEVATIONS HEREBY ESTABLISHED
- INDICATES PARK HERETOFORE ESTABLISHED AND HEREBY RETAINED
- INDICATES U.S. BULKHEAD LINE
- (AS NOTED) INDICATES U.S. PIERHEAD LINE
- INDICATES PARK HEREBY ESTABLISHED
- INDICATES SIDEWALK EASEMENT HEREBY ESTABLISHED
- INDICATES MAINTENANCE ACCESS EASEMENT
- 5.25' INDICATES ELEVATION HERETOFORE ESTABLISHED AND HEREBY RETAINED.
- 95.65' INDICATES TIE-IN DISTANCES TO ELEVATIONS HERETOFORE ESTABLISHED AND HEREBY RETAINED.
- 5.65' C INDICATES ELEVATION TOP OF CURB.

NOTE : THIS MAP SUPERCEDES MAP ACC. NO. 30043
DATED DECEMBER 3, 1975

AREA OUTLINED IN PINK EXCLUDED FROM ADOPTION

I, THEODORE MEEKINS, SECRETARY OF THE
BOARD OF ESTIMATE OF THE CITY OF NEW YORK
DO HEREBY CERTIFY THAT MAP ACC. NO. 30043
WAS RESCINDED BY THE BOARD OF ESTIMATE ON
Nov 15 1981 CAL NO 4

DATED : NEW YORK JAN 6 1983

Theodore M. Meekins
SECRETARY BOARD OF ESTIMATE

APPROVED FOR DEPARTMENT OF PARKS

Gordon Davis
COMMISSIONER OF PARKS

I, THEODORE MEEKINS, SECRETARY OF THE
BOARD OF ESTIMATE OF THE CITY OF NEW YORK
DO HEREBY CERTIFY THAT THIS MAP IS ONE
OF EIGHT SIMILAR MAPS ADOPTED BY THE SAID
BOARD OF ESTIMATE ON Nov 15 1981 CAL NO 4

DATED: NEW YORK JAN 6 1983

Theodore M. Meekins
SECRETARY BOARD OF ESTIMATE

LINDA W. SEALE, COMMISSIONER OF PORTS AND
TERMINALS, HEREBY APPROVE THIS MAP PURSUANT TO
SECTIONS 704 AND 705 THE NEW YORK CITY CHARTER

Linda W. Seale
COMMISSIONER OF DEPARTMENT
OF PORTS AND TERMINALS

CITY OF NEW YORK
OFFICE OF THE PRESIDENT — BOROUGH OF MANHATTAN
TOPOGRAPHICAL BUREAU

MAP SHOWING A CHANGE IN THE CITY MAP BY ESTABLISHING THE LINES AND GRADES OF A NEW STREET SYSTEM PORTIONS OF WHICH WILL LIE WITHIN LIMITING PLANES AND

BY LAYING OUT NEW PARKS AND A PUBLIC PLACE
SUBJECT TO EASEMENTS IN FAVOR OF THE
PORT AUTHORITY OF NEW YORK AND NEW JERSEY
AS NOTED
AND
SUBJECT TO A MAINTENANCE EASEMENT IN FAVOR OF
THE BATTERY PARK CITY AUTHORITY AND ABUTTING OWNERS
AS NOTED
AND

BY ESTABLISHING SEWER, SIDEWALK AND ACCESS EASEMENTS;
AND
BY DESIGNATING AN APPROXIMATE LOCATION FOR A PEDESTRIAN BRIDGE OVER
WEST STREET AND BY ELIMINATING THE STREET LINES ESTABLISHED ON MAP ACC. NO. 30043,
BY RESCINDING THE ADOPTION OF MAP ACC. NO. 30043
WHICH WAS APPROVED BY THE BOARD OF ESTIMATE
ON SEPTEMBER 14, 1978, CALENDAR NO. 24

ALL
WITHIN THE AREA GENERALLY BOUNDED
BY
BATTERY PLACE, HUDSON RIVER, LIBERTY STREET
MARGINAL STREET, WHARF OR PLACE AND WEST STREET
BOROUGH OF MANHATTAN
IN CONNECTION WITH THE SITE
FOR
BATTERY PARK CITY

NOTE : ELEVATIONS ARE REFERRED TO THE DATUM OF
THE TOPOGRAPHICAL BUREAU, BOROUGH OF MANHATTAN
WHICH IS 2.75 FEET ABOVE THE U.S.C & G DATUM
AT SANDY HOOK

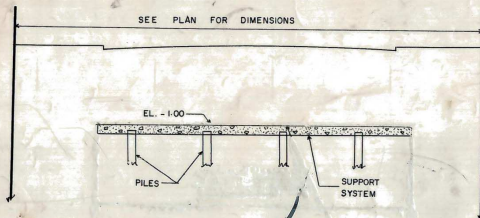
DATED : SEPTEMBER 28, 1981
REV. NOVEMBER 5, 1981

Andrew Stein
ANDREW STEIN
PRESIDENT, BOROUGH OF MANHATTAN
Anthony C. Gullotta
ANTHONY C. GULLOTTA, P.E.
DIRECTOR, TOPOGRAPHICAL BUREAU

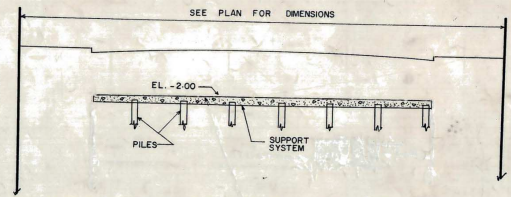
Filed in the office of the President Borough of Manhattan
1-11-83
Harry R. Blechman

ACC. NO. 30071

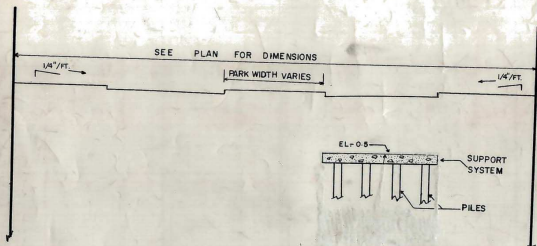
SHEET NO. 1



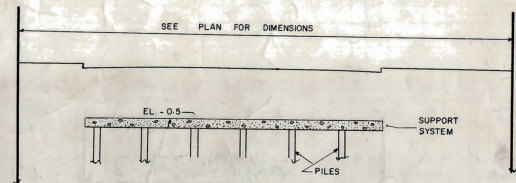
A TYPICAL SECTION AT WEST THAMES ST.
WEST OF SOUTH END AVENUE



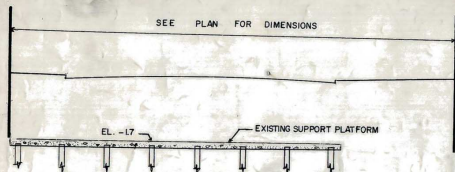
TYPICAL SECTION AT WEST THAMES ST.
EAST OF SOUTH END AVENUE



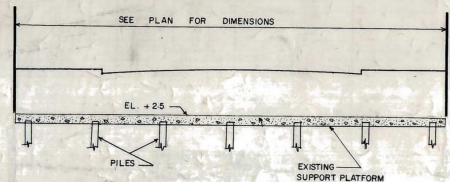
TYPICAL SECTION AT RECTOR PLACE



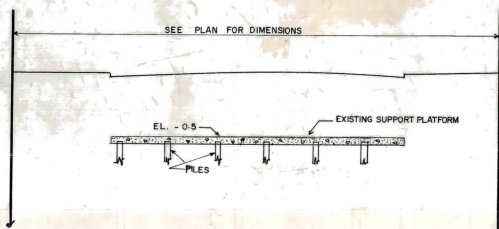
TYPICAL SECTION AT SOUTH END AVENUE
SOUTH OF RECTOR PLACE (NORTH)



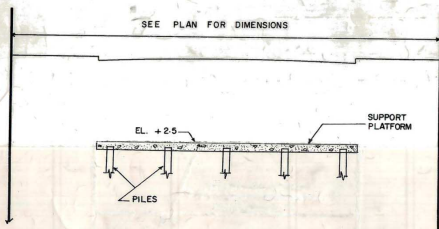
TYPICAL SECTION AT SOUTH END AVENUE
NORTH OF RECTOR PLACE (NORTH)



TYPICAL SECTION AT ALBANY ST.
WEST OF SOUTH END AVENUE



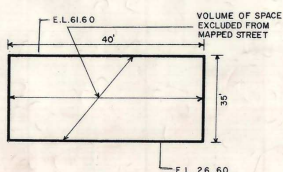
TYPICAL SECTION AT LIBERTY ST.



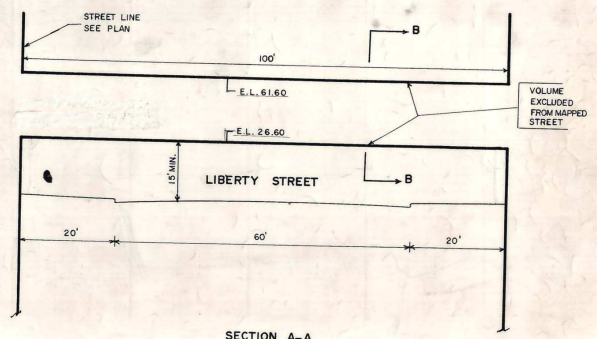
TYPICAL SECTION AT ALBANY STREET
EAST OF SOUTH END AVENUE

NOTES
1. LOCATION, SHAPE, ELEVATIONS AND WIDTHS OF PLATFORMS WILL VARY FROM THOSE SHOWN ON THIS SHEET. FINAL PLANS ARE ON FILE WITH THE BATTERY PARK CITY AUTHORITY.

2. STRUCTURES WILL BE MAINTAINED BY THE BATTERY PARK CITY AUTHORITY IN ACCORDANCE WITH AN AGREEMENT TO BE ENTERED INTO BETWEEN THE CITY OF NEW YORK AND THE BATTERY PARK CITY AUTHORITY.



SECTION B-B



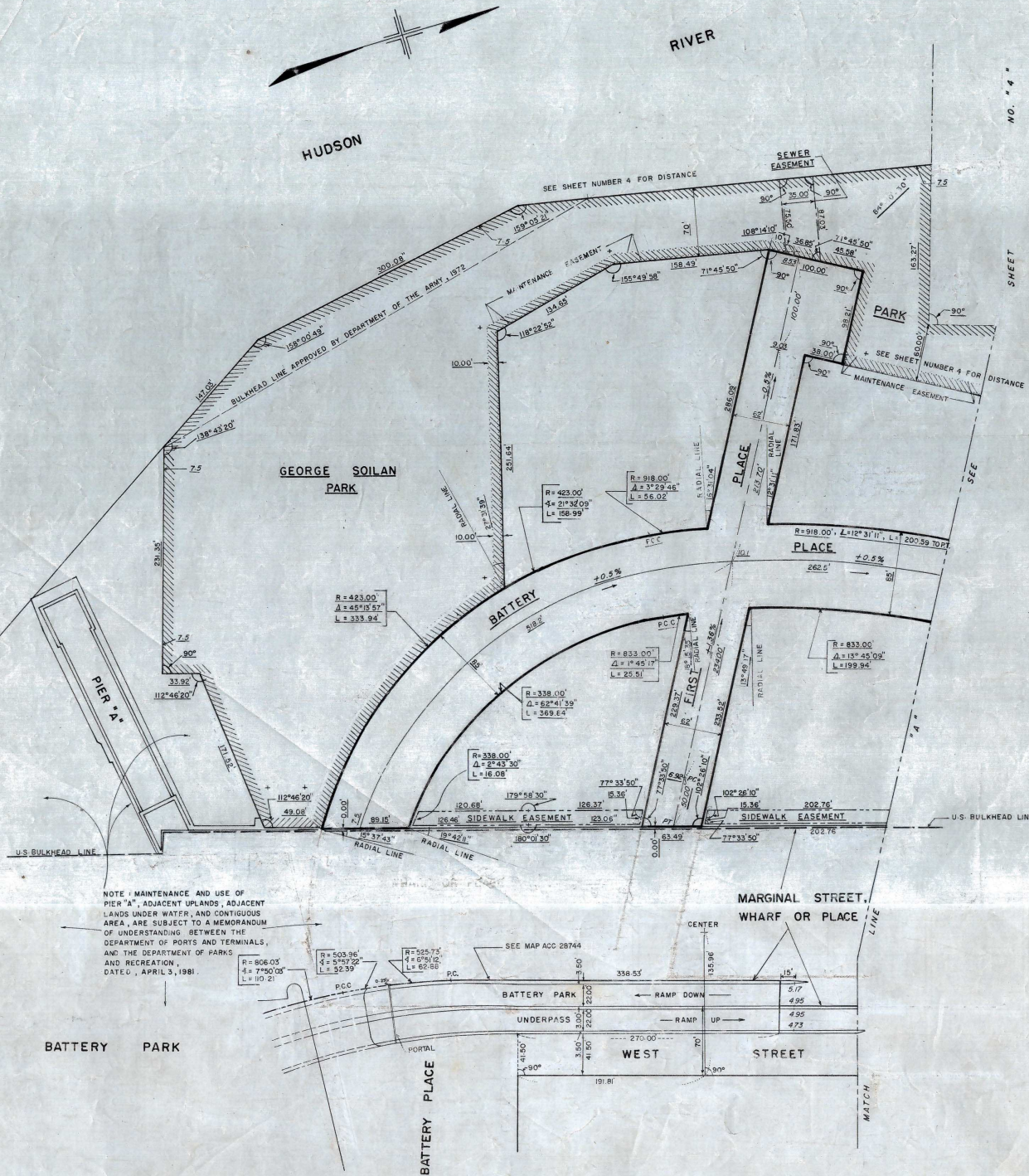
SECTION A-A

HUDSON

RIVER

NO. 4

SHEET



DRAWN BY: KLT
CHECKED BY: A.G.

Filed in the office of the Borough President Manhattan
1-11-83
Harry A. Weinstein

ACC.30071

DRAWN BY R.C.
CHECKED BY A.G.

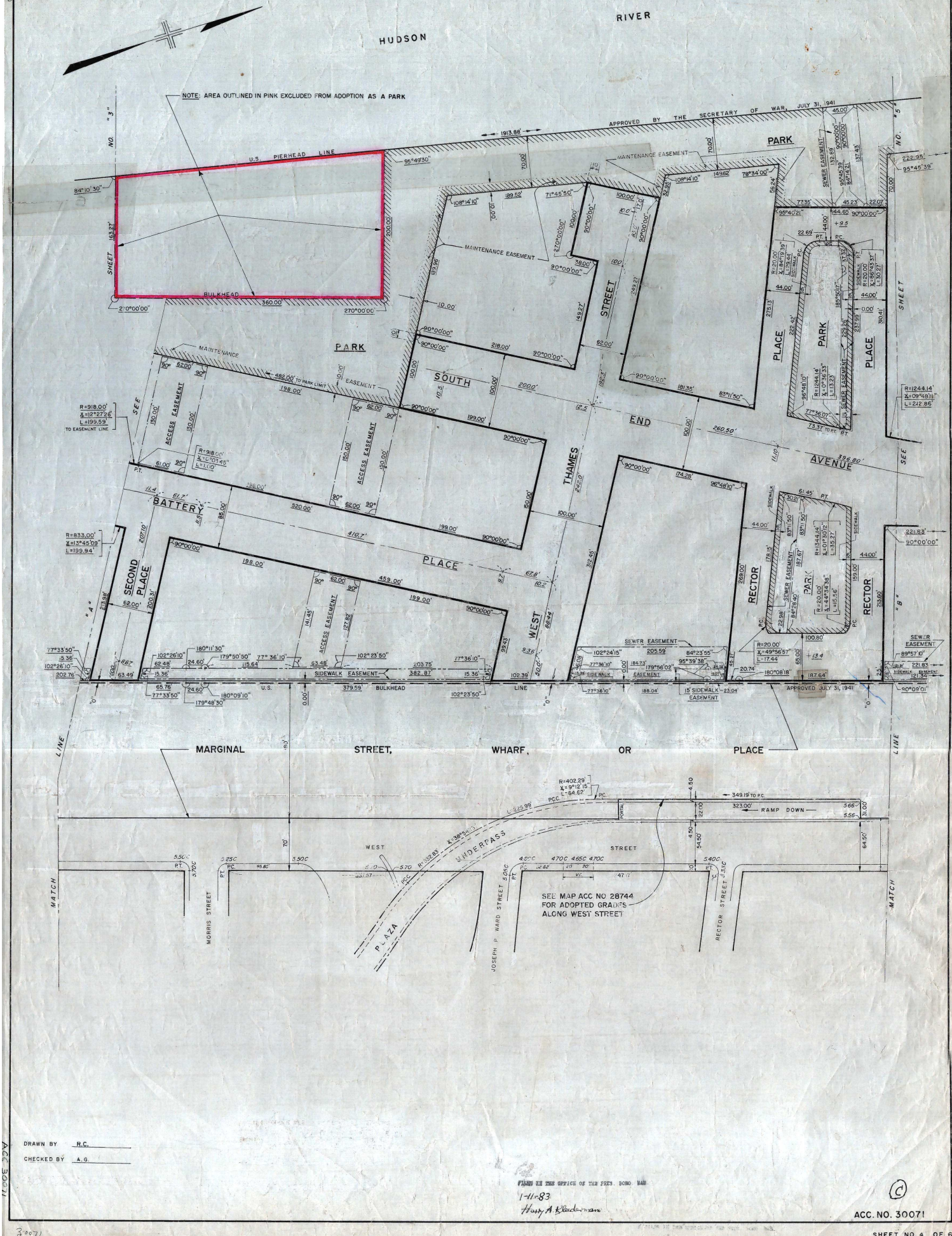
PLANT IN THE OFFICE OF THE FEES. BORO. MAR

1-11-83

Harry A. Kleiderman

ACC. NO. 30071

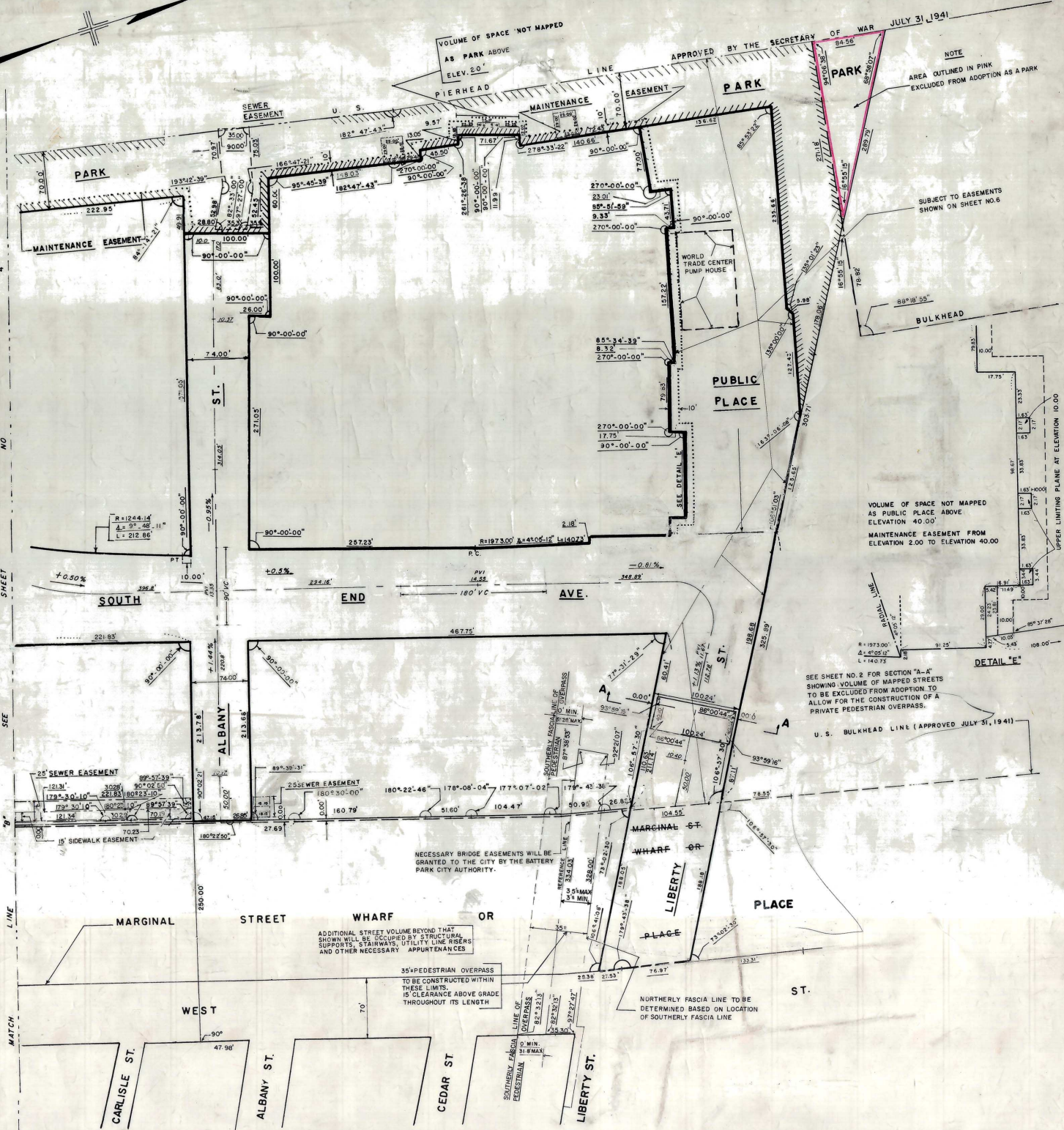
SHEET NO. 4 OF 6

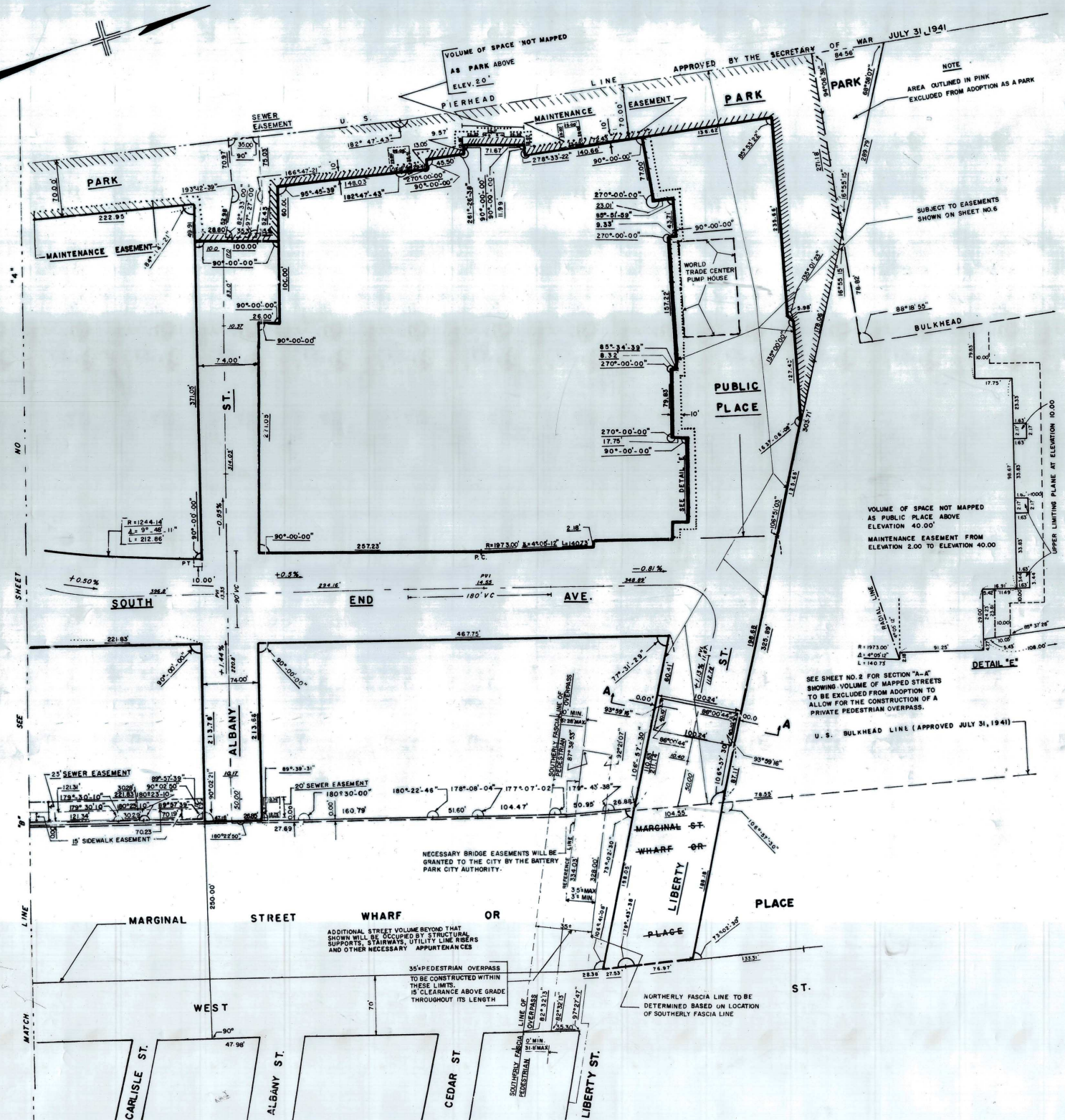


DRAWN BY Y.S.
CHECKED BY A.G.

Filed in the office of the President Borough of Manhattan
1-11-83
Harry A. Kleinerman

NOT TO SCALE
ACC. 30071





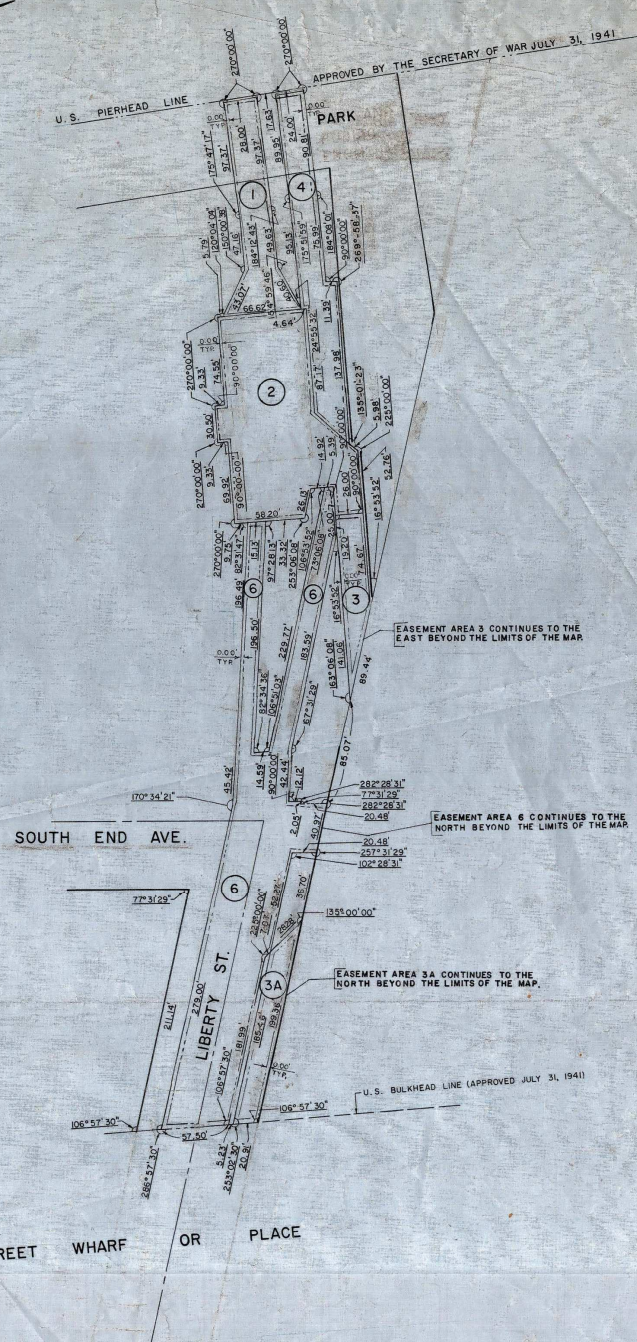
CITY OF NEW YORK
OFFICE OF THE PRESIDENT
TOPOGRAPHICAL BUREAU

MAP SHOWING A CHANGE IN THE CITY MAP
BY AMENDING
MAP NO. ACC. 30071, SHEET NO. 5 OF 6
WITH RESPECT TO THE DIMENSIONS OF A
SEWER EASEMENT
CONTIGUOUS TO THE NORTHWEST CORNER OF
ALBANY STREET
AND THE
MARGINAL STREET, WHARF OR PLACE
IN THE BOROUGH OF MANHATTAN

DATED: *John Stein*
PRESIDENT, BOROUGH OF MANHATTAN
DIRECTOR, TOPOGRAPHICAL BUREAU
PE 12/7/83

DRAWN BY Y.S.
CHECKED BY A.G.

APPROVED BY THE SECRETARY OF WAR JULY 31, 1941



PORT AUTHORITY EASEMENT AREAS

- AREA 1 - EASEMENT FOR EXISTING WORLD TRADE CENTER (W.T.C.) WATER INTAKE SYSTEM.
- AREA 2 - EASEMENT FOR EXISTING W.T.C. PUMP HOUSE AND UTILITIES.
- AREA 3 - EASEMENT FOR EXISTING W.T.C. UTILITIES.
- AREA 3A - EASEMENT FOR FUTURE W.T.C. UTILITIES.
- AREA 4 - EASEMENT FOR FUTURE EXPANSION OF W.T.C. PUMP HOUSE AND WATER INTAKE SYSTEM.
- AREA 5 - EASEMENT FOR EXISTING W.T.C. WATER OUTFALL SYSTEM (NOT WITHIN LIMITS OF THIS MAP)
- AREA 6 - ACCESS EASEMENT OVER LIBERTY STREET AND PUBLIC PLACE IN FAVOR OF PORT AUTHORITY.

ALL SUBJECT TO PROVISIONS OF
EASEMENT AGREEMENT

AMONG

THE PORT AUTHORITY OF NEW YORK AND NEW JERSEY AND
PORT AUTHORITY TRANS-HUDSON CORPORATION

AND

BPC DEVELOPMENT CORPORATION AND
BATTERY PARK CITY AUTHORITY

DATED AS OF SEPTEMBER 1, 1981

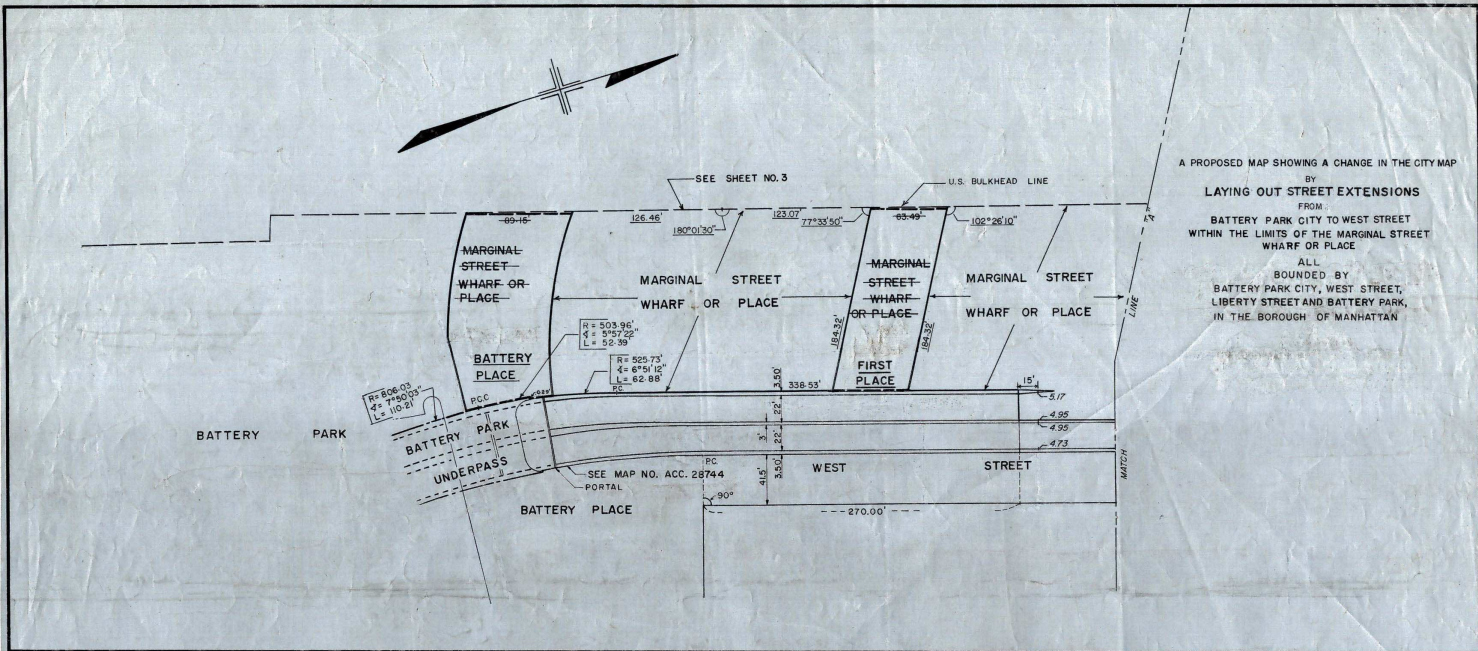
For INFORMATIONAL USE ONLY

Filed in the office of the President Borough of Manhattan
1-11-83 Harry A. Kleiman

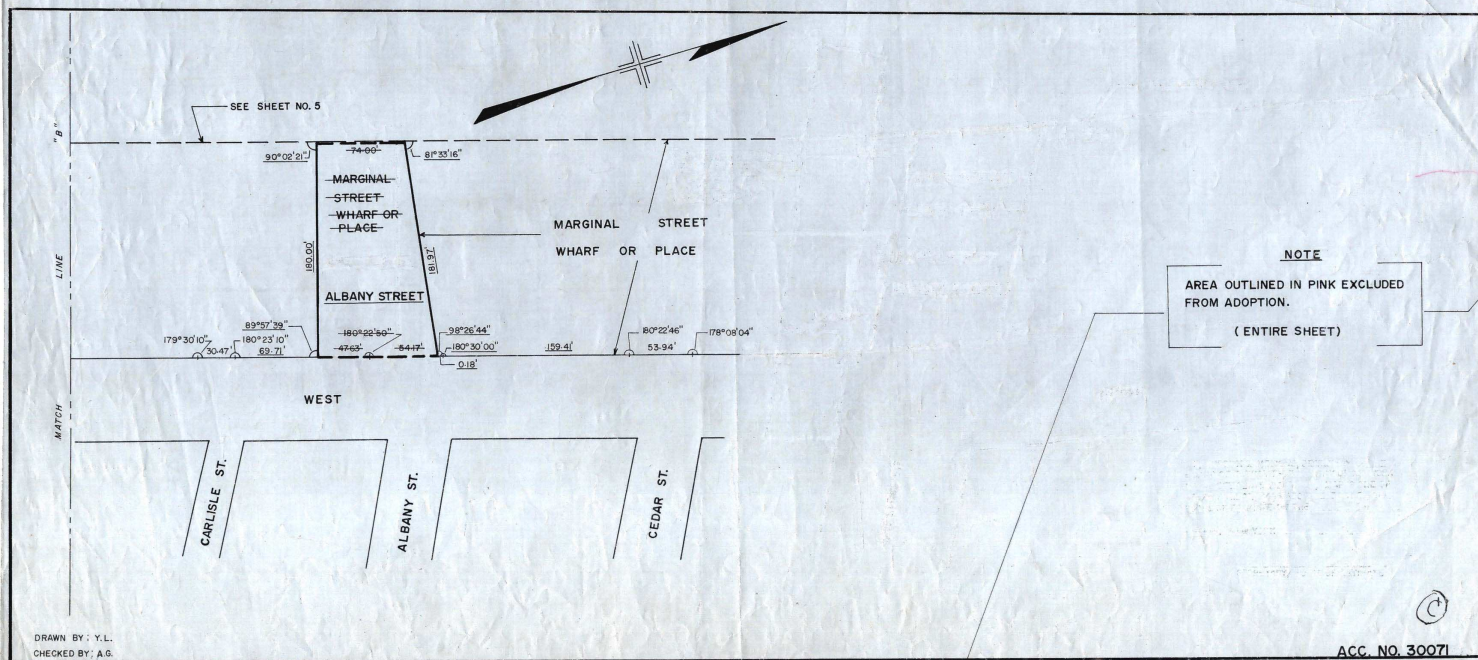
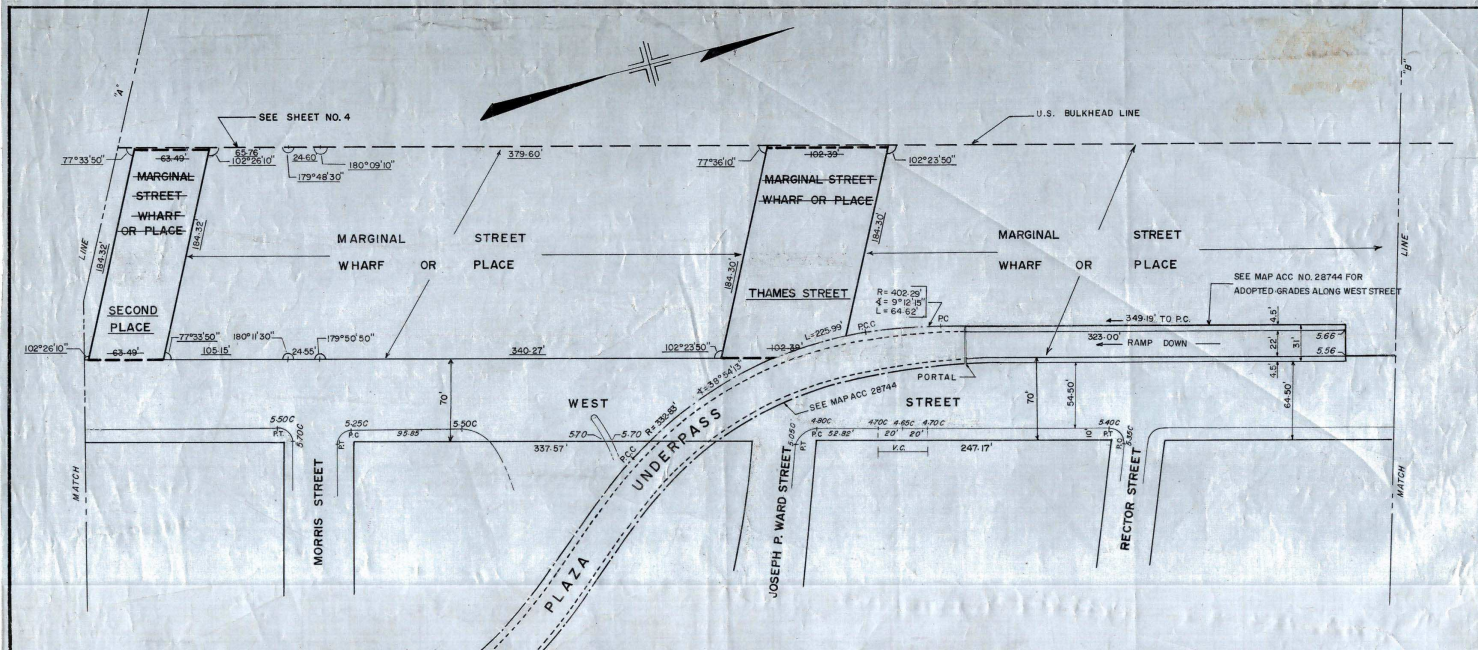
For Informational use only

ACC. NO 30071

Sheet No 6 OF 6



A PROPOSED MAP SHOWING A CHANGE IN THE CITY MAP
 BY
LAYING OUT STREET EXTENSIONS
 FROM
 BATTERY PARK CITY TO WEST STREET
 WITHIN THE LIMITS OF THE MARGINAL STREET
 WHARF OR PLACE
 ALL
 BOUNDED BY
 BATTERY PARK CITY, WEST STREET,
 LIBERTY STREET AND BATTERY PARK,
 IN THE BOROUGH OF MANHATTAN



NOTE
 AREA OUTLINED IN PINK EXCLUDED
 FROM ADOPTION.
 (ENTIRE SHEET)