

- LEGEND**
- INDICATES BOUNDARY OF EASEMENT FOR PEDESTRIAN WALKWAY HEREBY DELINEATED, ABOVE ELEVATION 40.0 OR ELEVATION 25.0.
 - INDICATES REMOVAL OF A PORTION OF THE BOUNDARY LINE OF A PUBLIC PEDESTRIAN WALKWAY PREVIOUSLY DELINEATED ABOVE ELEVATION 40.0.
 - INDICATES STREET LINE HERETOFORE ESTABLISHED AND HEREBY RETAINED.
 - INDICATES REMOVAL OF LINE OF 25' WIDE PUBLIC EASEMENT FOR PEDESTRIAN WALKWAY PREVIOUSLY DELINEATED ABOVE ELEVATION 25.0, OR REMOVAL OF FUTURE EXTENSION OF PUBLIC PEDESTRIAN WALKWAY.
 - INDICATES STREET VOLUME TO BE DISCONTINUED AND CLOSED.
 - INDICATES DIMENSIONS HERETOFORE ESTABLISHED AND HEREBY RETAINED.
 - INDICATES DIMENSION HEREBY ESTABLISHED.
 - INDICATES TIE-IN DIMENSION HEREBY ESTABLISHED.
 - INDICATES DIMENSION HERETOFORE ESTABLISHED AND HEREBY ELIMINATED.
 - ELEVATIONS REFER TO DATUM USED BY THE TOPOGRAPHICAL BUREAU, BOROUGH OF MANHATTAN WHICH IS 2.75 FEET ABOVE THE NATIONAL GEODETIC SURVEY VERTICAL DATUM OF 1929 (UNITED STATES COAST AND GEODETIC SURVEY DATUM) MEAN SEA LEVEL, SANDY HOOK, NEW JERSEY.
 - CERTAIN AREAS SHOWN ON THIS MAP ARE SUBJECT TO THE TERMS OF AN AGREEMENT DATED MARCH 22, 1973, AND RECORDED IN THE OFFICE OF THE REGISTER, COUNTY OF NEW YORK, APRIL 20, 1973, REEL 475 PAGE 1397, AMONG THE CITY OF NEW YORK, THE SOCIETY OF THE NEW YORK HOSPITAL, NEW YORK SOCIETY FOR THE RELIEF OF THE RUPTURED AND CRIPPLED, AND THE ROCKEFELLER UNIVERSITY.
 - NOTE: MAP INTENDED TO SHOW LIMITS OF AIR RIGHTS AVAILABLE TO ADJUTING INSTITUTIONS AS SHOWN ON PLAN.
 - NOTE A: NO CONSTRUCTION PERMITTED ABOVE STREET (SEE SECTIONS A-A, B-B, D-D, E-E) EXCEPT BY APPROVAL OF THE BOARD OF ESTIMATE AND CITY PLANNING COMMISSION AFTER REVIEW BY CITY AGENCIES.
 - NOTE B: MINIMUM VERTICAL CLEARANCE OF 17 FEET TO UNDERSIDE OF PLATFORM IS SUBJECT TO MODIFICATION AS MAY BE NECESSARY IN ORDER TO MEET REQUIRED SIGHT DISTANCES TO HIGHWAY SIGNS.
 - NOTE C: CONSTRUCTION OVER PEDESTRIAN WALKWAY IS GOVERNED BY THE PROVISIONS OF ARTICLE 5 OF THE SECOND AMENDMENT (DATED AS OF NOV. 2, 1983) WHICH MODIFIES ARTICLE 12 OF THE AGREEMENT DATED MARCH 22, 1973, AMONG THE CITY OF NEW YORK, THE SOCIETY OF THE NEW YORK HOSPITAL, NEW YORK SOCIETY FOR THE RELIEF OF THE RUPTURED AND CRIPPLED, THE HOSPITAL FOR SPECIAL SURGERY AND THE ROCKEFELLER UNIVERSITY.
 - INDICATES STREET LINE HEREBY ESTABLISHED.
 - INDICATES STREET LINE HERETOFORE ESTABLISHED AND HEREBY ELIMINATED, TO DESIGNATE UPPER LIMITING PLANE OF STREET, AS SHOWN ON SECTION A-A, SHEET N-2.
 - INDICATES REMOVAL OF THE LINES OF A PEDESTRIAN OVERPASS PREVIOUSLY DELINEATED.

CITY OF NEW YORK
OFFICE OF THE BOROUGH PRESIDENT OF MANHATTAN
TOPOGRAPHICAL BUREAU

MAP ACC. NO. 30119

SHOWING A CHANGE IN THE CITY MAP
BY
ELIMINATING, DISCONTINUING AND CLOSING
VOLUMES OF FRANKLIN D. ROOSEVELT DRIVE
AND
BY REMOVING A DELINEATED PUBLIC EASEMENT
FOR A PEDESTRIAN WALKWAY
AND BY DELINEATING AN EASEMENT FOR A
PEDESTRIAN WALKWAY, A PEDESTRIAN
BRIDGE OVER THE F.D.R. DRIVE AND A
PEDESTRIAN WALKWAY AT GRADE
BETWEEN THE EASTERLY PROLONGATIONS OF
EAST 63RD STREET AND EAST 72ND STREET

BOROUGH OF MANHATTAN
IN CONNECTION WITH THE CONSTRUCTION
OF A LABORATORY BUILDING FOR
THE ROCKEFELLER UNIVERSITY

DATED MAY 11, 1989
REV. JUNE 2, 1989

SCALE AS SHOWN

PRESIDENT, BOROUGH OF MANHATTAN

DIRECTOR, TOPOGRAPHICAL BUREAU

ACC. NO. 30119
SHEET NO. 1 OF 2

DRAWN BY: A.M.
VERIFIED BY: B.C.

THEODORE MEEKINS, SECRETARY OF THE
BOARD OF ESTIMATE OF THE CITY OF NEW YORK
DO HEREBY CERTIFY THAT THIS MAP IS ONE OF
SEVEN SIMILAR MAPS ADOPTED BY THE BOARD
OF ESTIMATE ON THE 7th of December, 1989 (Col. No. 2).

DATED NEW YORK 4-12-90

SECRETARY, BOARD OF ESTIMATE

PREPARED BY
EARL B. LOVELL - S.P. BELCHER, INC.

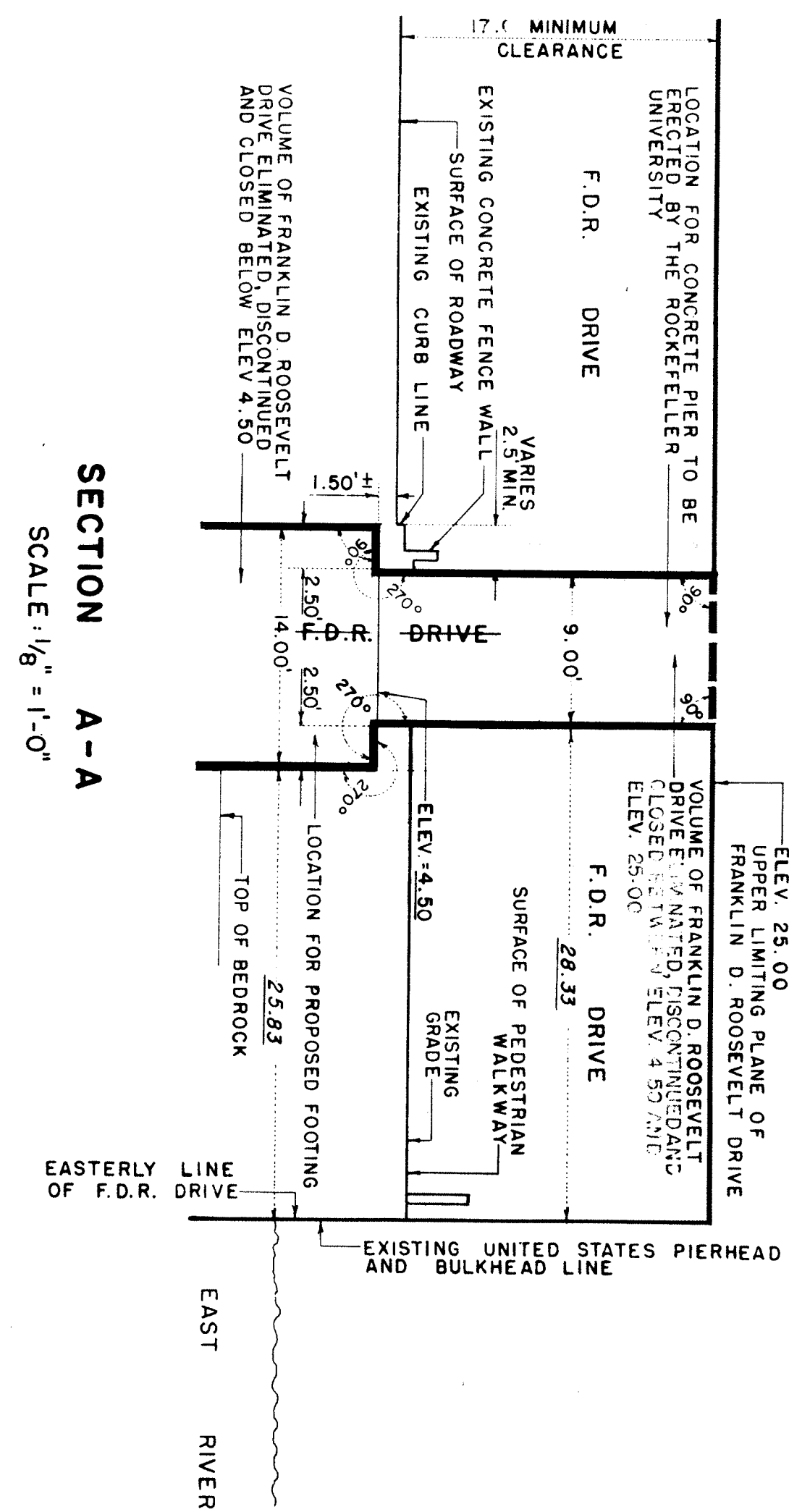
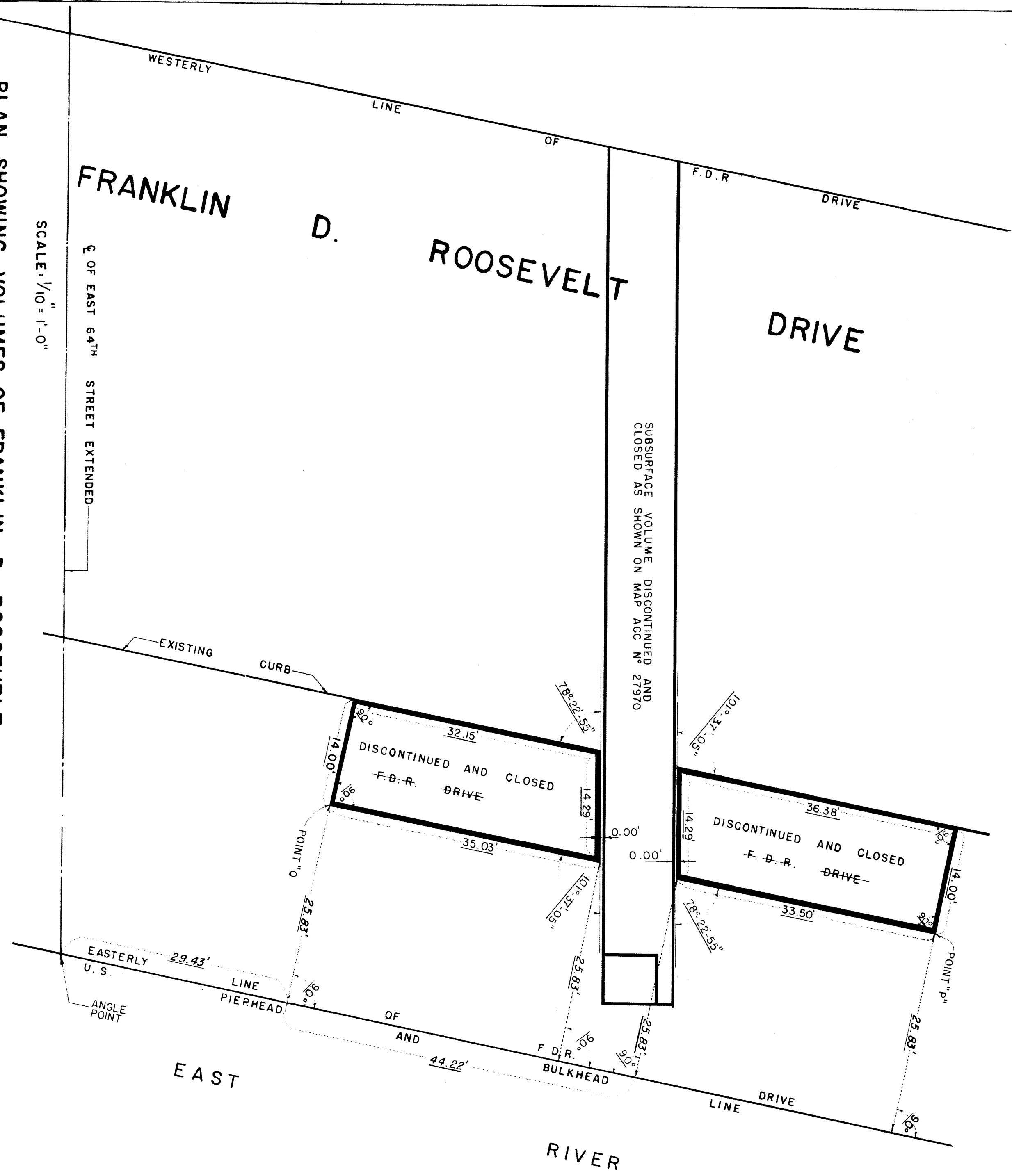
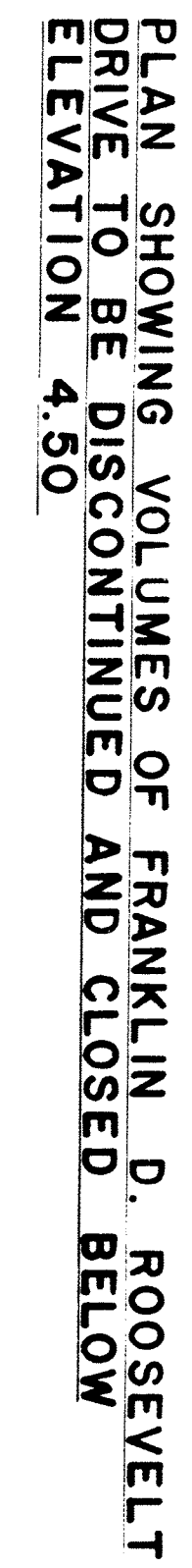
Benjamin D. Goldberg

CITY SURVEYOR
157 CHAMBERS STREET

VICE-PRESIDENT
NEW YORK, N.Y. 10007

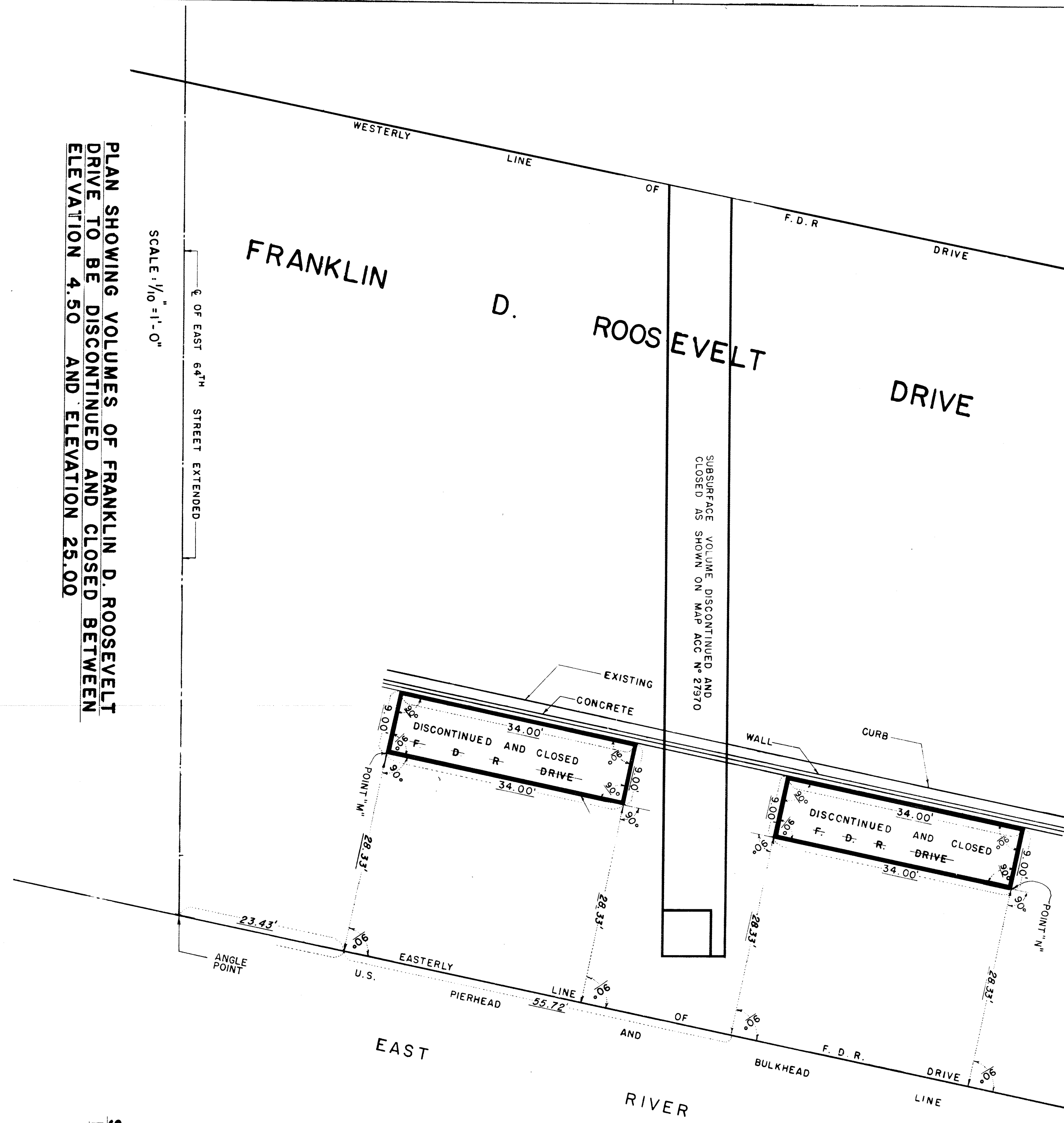
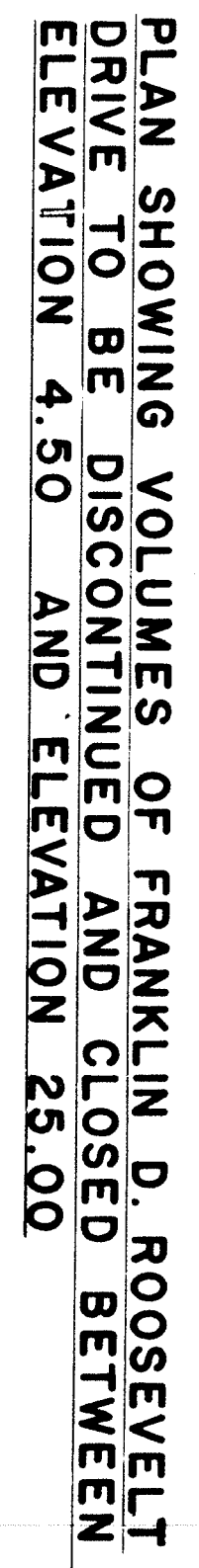
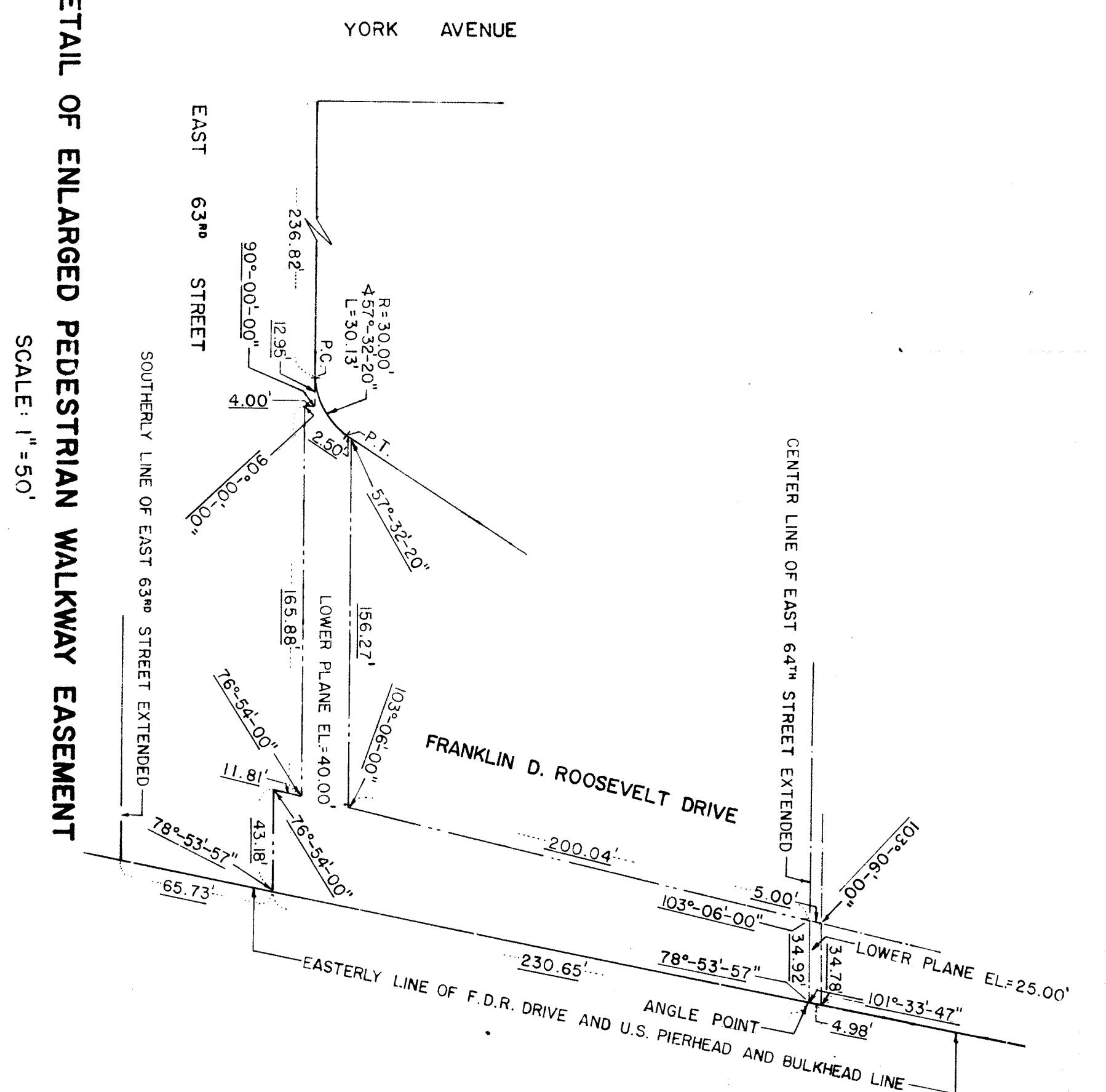
REFERENCE MAPS

ACC. NO. 30023 (CPC 22062)
ACC. NO. 30081 (CPC 840092 MMM)
ACC. NO. 30065 (CPC 800100 MMM)
ACC. NO. 27970 (CPC 1241)
ACC. NO. 27899 (CPC 876)



DETAIL OF ENLARGED PEDESTRIAN WALKWAY EASEMENT

SCALE: 1" = 50'



PLAN "B"
SHOWING DIMENSIONS OF LINES OF F.D.R. DRIVE
HEREBY ESTABLISHED ABOVE AND BELOW ELEV. 4.50
SCALE: 1" = 1'-0"

