

HUDSON RIVER

UNITED STATES PIERHEAD LINE APPROVED BY THE
SECRETARY OF WAR JULY 31, 1941

UNITED STATES MODIFIED PIERHEAD LINE APPROVED BY THE SECRETARY OF WAR JANUARY 13, 1931

NOTES

1. FOR ADDITIONAL ANGLES AND DIMENSIONS OF SITE SEE SHEET 2.
2. FOR LEGAL GRADES, SEE SHEET 2.
3. SEE SHEET 3 FOR SECTIONS.
4. EASEMENTS, CORRIDORS AND PROPERTY LINES ARE SHOWN FOR INFORMATIONAL PURPOSES ONLY AND ARE NOT FORMALLY PART OF THE OFFICIAL CITY MAP.

SCALE: 1"=120'

UNITED STATES BULKHEAD LINE APPROVED BY
THE SECRETARY OF WAR JULY 31, 1941UNITED STATES BULKHEAD LINE APPROVED BY
THE SECRETARY OF WAR MARCH 26, 1927UNITED STATES MODIFIED BULKHEAD LINE APPROVED BY
THE SECRETARY OF WAR FEBRUARY 5, 1930MILLER HIGHWAY EASEMENT
FOR DIMENSIONS SEE ACC. NO. 30094A
PART 2, AMENDED SHEET NO. 7
DATED APRIL 12, 1932SEC. 4
BL. 1171SEWER
EASEMENT
FOR DIMENSIONS
SEE ACC. NO. 30094A
PART 2, AMENDED
SHEET NO. 7
DATED
APRIL 12, 1932W 70TH STREET
VIADUCT
FOR DIMENSIONS
SEE ACC. NO. 30094A
PART 2, AMENDED
SHEET NO. 7
DATED
APRIL 12, 1932SEWER
EASEMENT
FOR DIMENSIONS
SEE ACC. NO. 30094A
PART 2, AMENDED
SHEET NO. 7
DATED
APRIL 12, 1932

REFERENCE MAPS

ACC 29850 DATED 2-26-1965 (CP-18847)
ACC 29842 DATED 9-21-1964 (CP-18683)
ACC 29809 DATED 4-08-1963 (CP-17910)
ACC 29586 DATED 1-29-1959 (CP-14692)
ACC 29581 DATED 3-16-1959 (CP-14755)
ACC 28868 DATED 7-7-1947 (CP-5072)
ACC 25692 APPROVED 1-16-1929
ACC 30094A APPROVED (3-15-1927)
ACC 28416 DATED 1-9-1941 (CP-1854)
ACC 28436 DATED 10-8-1942 (CP-2508)
ACC DATED 10-3-1941 (CP-2352)

SEC. 4
BL. 1187SEWER
EASEMENT
FOR DIMENSIONS SEE ACC. NO. 30094A
PART 2, AMENDED SHEET NO. 7
DATED APRIL 12, 1932RIVERSIDE
PARK
LINE AS SHOWN ON CITY TAX MAP
RIVERSIDE DRIVESEC. 4
BL. 1184SEC. 4
BL. 1179CITY OF NEW YORK
OFFICE OF THE PRESIDENT, BOROUGH OF MANHATTAN
TOPOGRAPHICAL BUREAUMAP ACC. NO. 30124 SHOWING A CHANGE
IN THE CITY MAP

BY
ESTABLISHING THE LINES AND GRADES
OF
WEST 63RD STREET, WEST 64TH STREET AND
EAST TOWER DRIVE AND DELINEATING PUBLIC
ACCESS AND PUBLIC PEDESTRIAN ACCESS
EASEMENTS

ALL
WITHIN THE AREA GENERALLY BOUNDED
BY
WEST END AVENUE, WEST 59TH STREET
WEST 72ND STREET AND THE HUDSON RIVER

DATED: SEPTEMBER 6, 1989 SCALE: AS NOTED

BOROUGH OF MANHATTAN
IN CONNECTION WITH THE SITE
FOR
THE MANHATTAN WEST PROJECT

I, LOIS McDANIEL, SECRETARY OF THE CITY PLANNING COMMISSION, DO HEREBY
CERTIFY THAT THIS IS ONE OF 8 SIMILAR MAPS ADOPTED BY THE CITY
PLANNING COMMISSION ON THE 27TH DAY OF DECEMBER, 1989 (CAL. No. 49)
AND SUBSEQUENTLY ADOPTED BY THE BOARD OF ESTIMATE AS MODIFIED ON FEBRUARY 22, 1990
(CAL. No. 84) AND THAT THESE MAPS WERE FILED ON THE DATE OF THIS CERTIFICATION
DATE: December 9, 1989

LOIS McDaniel
SECRETARY CITY PLANNING COMMISSIONDAVID DINKINS
PRESIDENT, BOROUGH OF MANHATTANANTHONY C. GULOTTA, P.E.
DIRECTOR, TOPOGRAPHICAL BUREAUMAP PREPARED BY:
VOLLMER ASSOCIATESHORIZONTAL CONTROL VERIFIED BY:
EARL B. LOVELL - S.P. BELCHER, INC.
*Benjamin D. Goldberg*LICENSED LAND & CITY SURVEYORS VICE PRESIDENT
157 CHAMBERS STREET 963.33 NEW YORK, N.Y. 10007

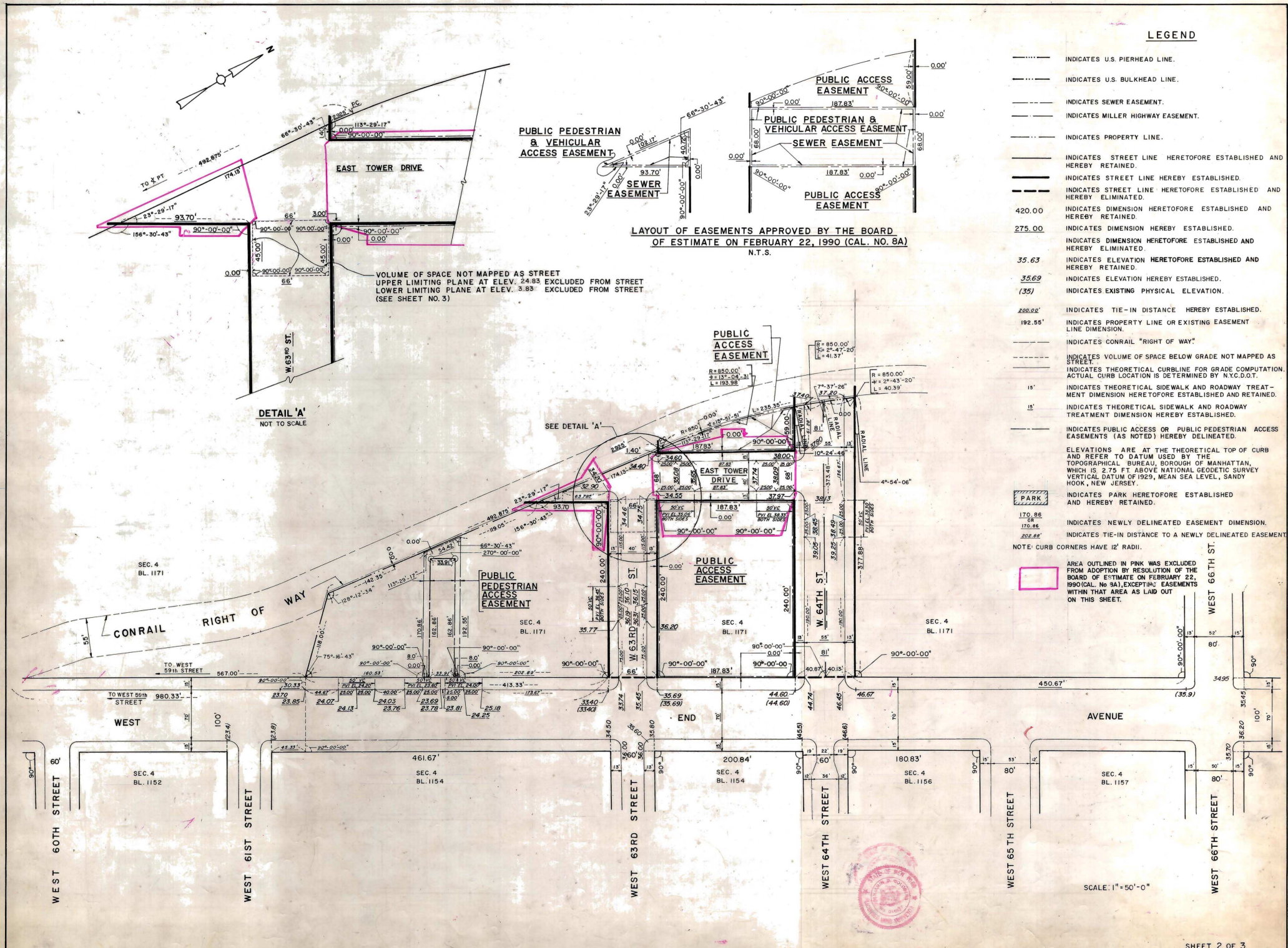
LEGEND

- INDICATES U.S. PIERHEAD LINE.
- INDICATES U.S. BULKHEAD LINE.
- INDICATES SEWER EASEMENT.
- INDICATES MILLER HIGHWAY EASEMENT.
- INDICATES PROPERTY LINE.
- INDICATES STREET LINE HERETOFORE ESTABLISHED AND HEREBY RETAINED.
- INDICATES STREET LINE HEREBY ESTABLISHED.
- INDICATES STREET LINE HERETOFORE ESTABLISHED AND HEREBY ELIMINATED.
- 420.00 INDICATES DIMENSION HERETOFORE ESTABLISHED AND HEREBY RETAINED.
- 275.00 INDICATES DIMENSION HEREBY ESTABLISHED.
- 35.63 INDICATES ELEVATION HERETOFORE ESTABLISHED AND HEREBY RETAINED.
- 3569 INDICATES ELEVATION HEREBY ESTABLISHED.
- (35) INDICATES EXISTING PHYSICAL ELEVATION.
- 188.8' INDICATES TIE-IN DISTANCE HEREBY ESTABLISHED.
- 192.55' INDICATES PROPERTY LINE OR EXISTING EASEMENT LINE DIMENSION.
- INDICATES CONRAIL "RIGHT OF WAY".
- INDICATES VOLUME OF SPACE BELOW GRADE NOT MAPPED AS STREET.
- INDICATES THEORETICAL CURBLINE FOR GRADE COMPUTATION. ACTUAL CURB LOCATION IS DETERMINED BY N.Y.C.D.O.T.
- 15' INDICATES THEORETICAL SIDEWALK AND ROADWAY TREATMENT DIMENSION HERETOFORE ESTABLISHED AND RETAINED.
- 15' INDICATES THEORETICAL SIDEWALK AND ROADWAY TREATMENT DIMENSION HEREBY ESTABLISHED.
- INDICATES PUBLIC ACCESS OR PUBLIC PEDESTRIAN ACCESS EASEMENTS (AS NOTED) HEREBY DELINEATED.
- ELEVATIONS ARE AT THE THEORETICAL TOP OF CURB AND REFER TO DATUM USED BY THE TOPOGRAPHICAL BUREAU, BOROUGH OF MANHATTAN, WHICH IS 2.75 FT. ABOVE NATIONAL GEODETIC SURVEY VERTICAL DATUM OF 1929, MEAN SEA LEVEL, SANDY HOOK, NEW JERSEY.
- INDICATES PARK HERETOFORE ESTABLISHED AND HEREBY RETAINED.
- INDICATES NEWLY DELINEATED EASEMENT DIMENSION.
- INDICATES TIE-IN DISTANCE TO A NEWLY DELINEATED EASEMENT.

NOTE: CURB CORNERS HAVE 12' RADII.

AREA OUTLINED IN PINK WAS EXCLUDED FROM ADOPTION BY RESOLUTION OF THE BOARD OF ESTIMATE ON FEBRUARY 22, 1990 (CAL. NO. 8A), EXCEPTING EASEMENTS WITHIN THAT AREA AS LAID OUT ON THIS SHEET.

SCALE: 1"=50'-0"



* NOTE 1: PUBLIC ACCESS OR PUBLIC PEDESTRIAN ACCESS EASEMENT AS DEFINED IN MAPING AGREEMENT TO BE FILED WITH CITY REGISTER.

NOTE 2: ALL ANGLES ARE 90 DEGREES.
LLP=LOWER LIMITING PLANE

