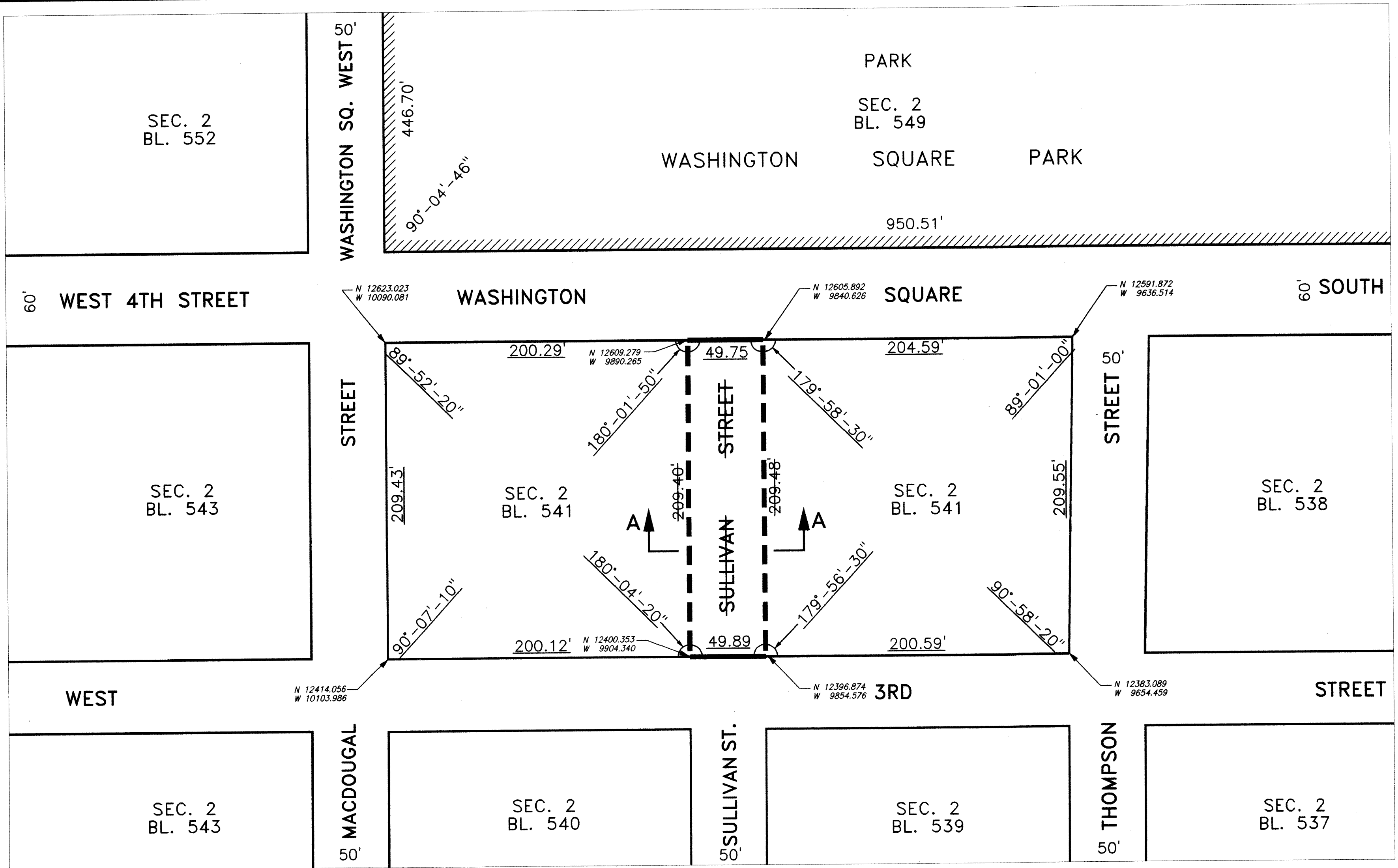


MAP ABOVE ELEV. 21.60



MAP BELOW ELEV. 21.60

I, ROSAR ROMERO, SECRETARY OF THE CITY PLANNING COMMISSION, DO HEREBY CERTIFY THAT THIS MAP IS ONE OF EIGHT SIMILAR MAPS APPROVED BY THE CITY PLANNING COMMISSION ON JANUARY 6, 1999 (CALENDAR No.13) WHICH ACTION COMPRISED FINAL APPROVAL AND THAT THIS MAP WAS FILED ON THE DATE OF THIS CERTIFICATION AND WILL TAKE EFFECT ON THE FOLLOWING DAY:

DATE: NEW YORK March 24, 2000

Rosa R. Romero
SECRETARY, CITY PLANNING COMMISSION

LEGEND

- Indicates street line heretofore established and hereby retained.
- - - Indicates street line heretofore established and hereby eliminated.
- Indicates street line hereby established.
- Indicates sidewalk and roadway treatment hereby established or heretofore established and retained.

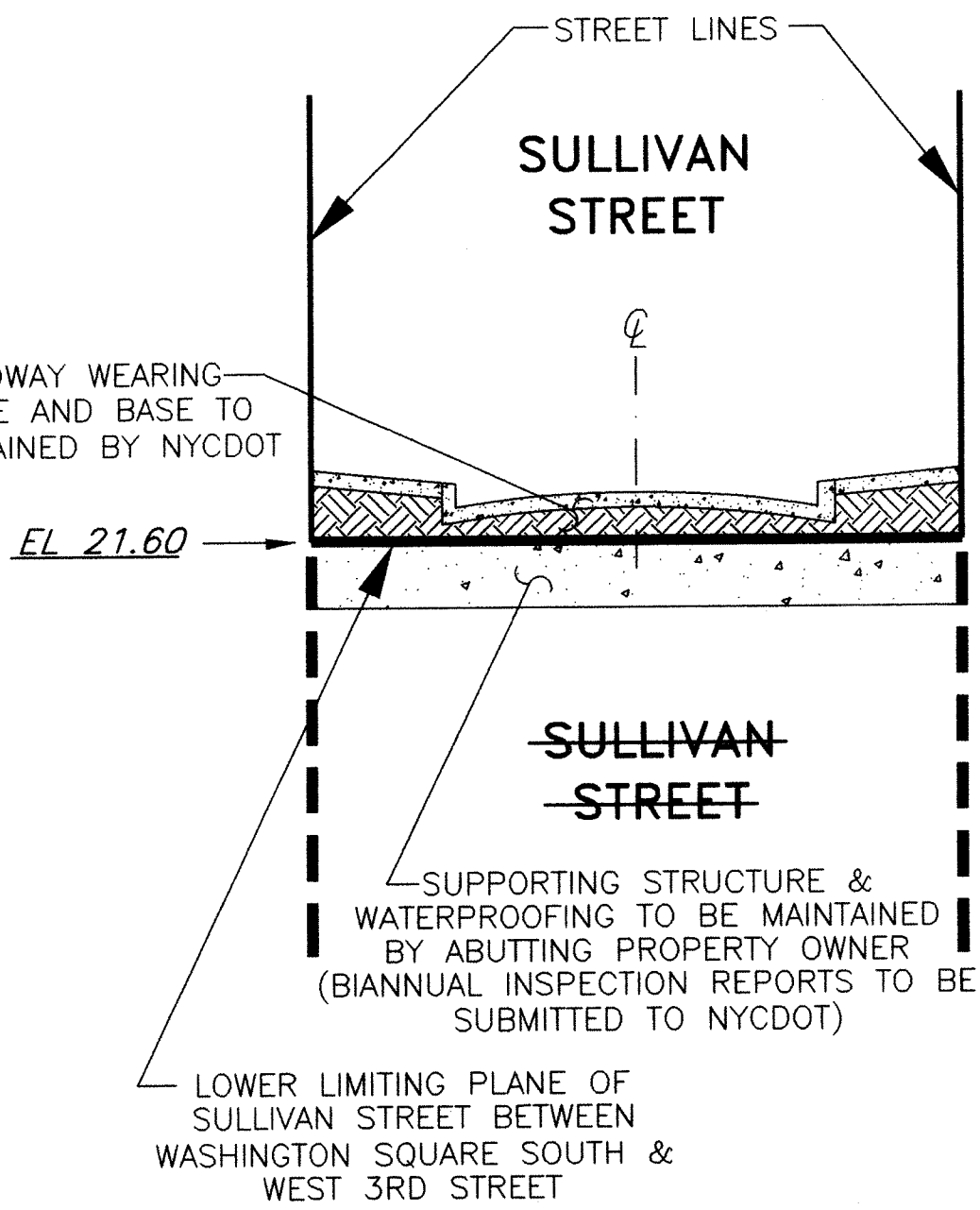
(Discontinued and Closed)

Indicates street lands to be discontinued and closed.

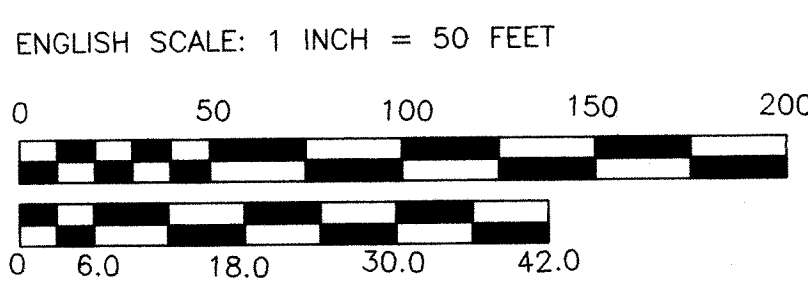
PARK

Indicates park heretofore established and hereby retained.

- 446.70' Indicates dimension heretofore established and hereby retained.
- 204.59' Indicates dimension hereby established.
- 209.42' Indicates dimension heretofore established and hereby eliminated.
- 25.4 Indicates elevation hereby established.
- 81' Indicates tie-in distance hereby established.
- 11' Indicates roadway and sidewalk treatment dimension hereby established.



SECTION A-A LOOKING NORTH
N.T.S.



THE COPYRIGHT NOTICE: © 1998 PRESIDENT OF THE BOROUGH OF MANHATTAN

REFERENCE MAPS

ACC. NO. 29743 DATED AUGUST 10, 1950 CPC NO. 15054

NOTE

Elevations are for top of curb and are referred to the datum of the Topographical Bureau, Borough of Manhattan, which is 2.75 feet above the USC&G, mean sea level survey datum at Sandy Hook, New Jersey.

CITY OF NEW YORK
BOROUGH OF MANHATTAN
OFFICE OF THE PRESIDENT
TOPOGRAPHICAL BUREAU

MAP ACC NO. 30202

SHOWING

THE ELIMINATION, DISCONTINUANCE AND CLOSING
OF
THE SUBSURFACE VOLUME OF SULLIVAN STREET
BELOW

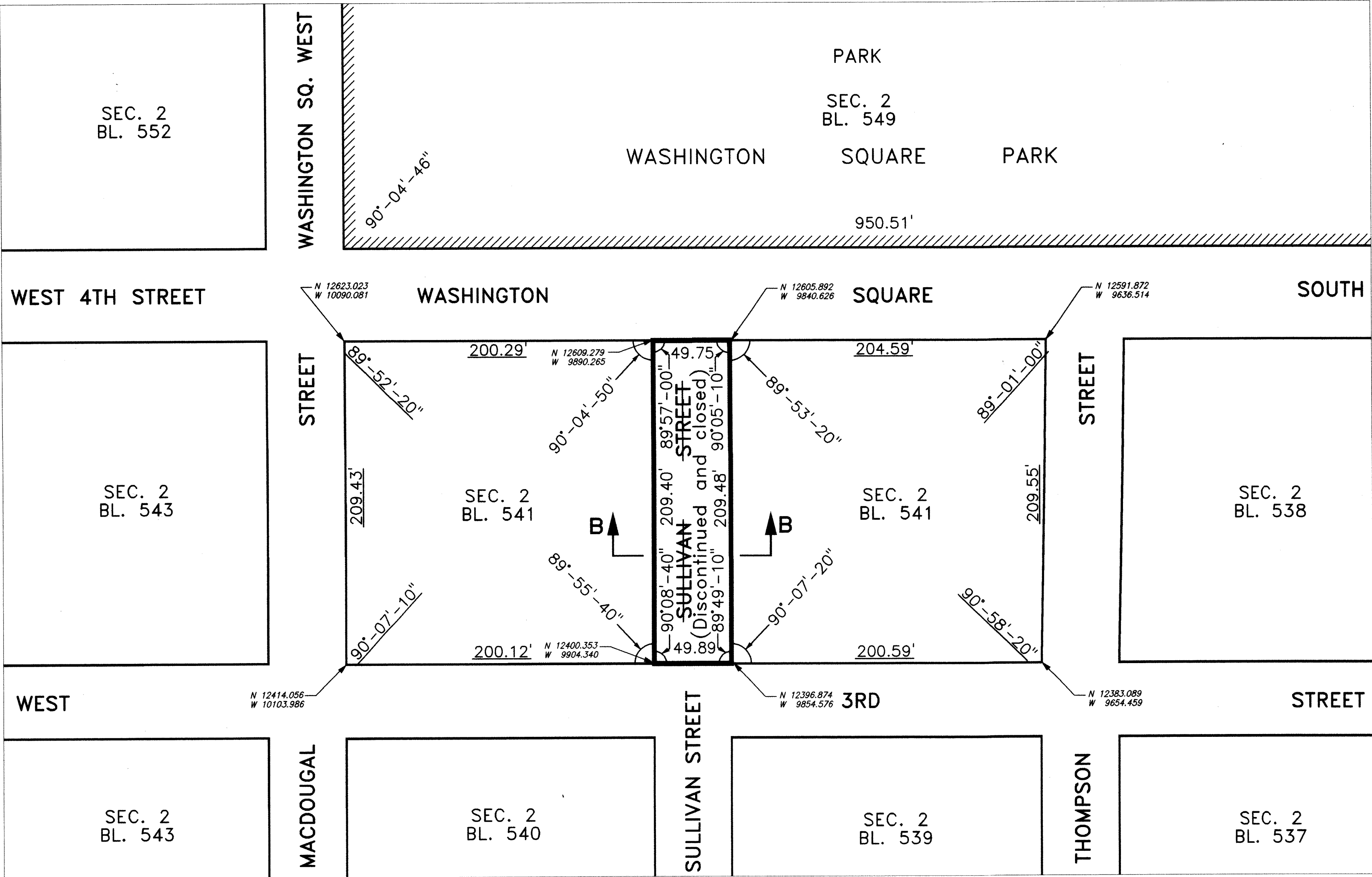
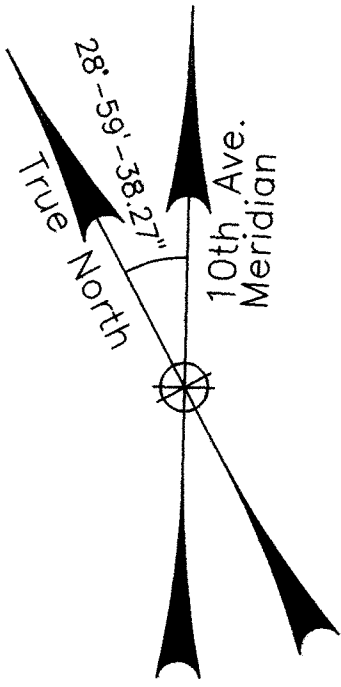
A PLANE 21.60 FEET ABOVE MANHATTAN DATUM
FROM
WASHINGTON SQUARE SOUTH TO WEST THIRD STREET
AND

THE ADJUSTMENT OF GRADES AND
BLOCK DIMENSIONS NECESSITATED THEREBY.

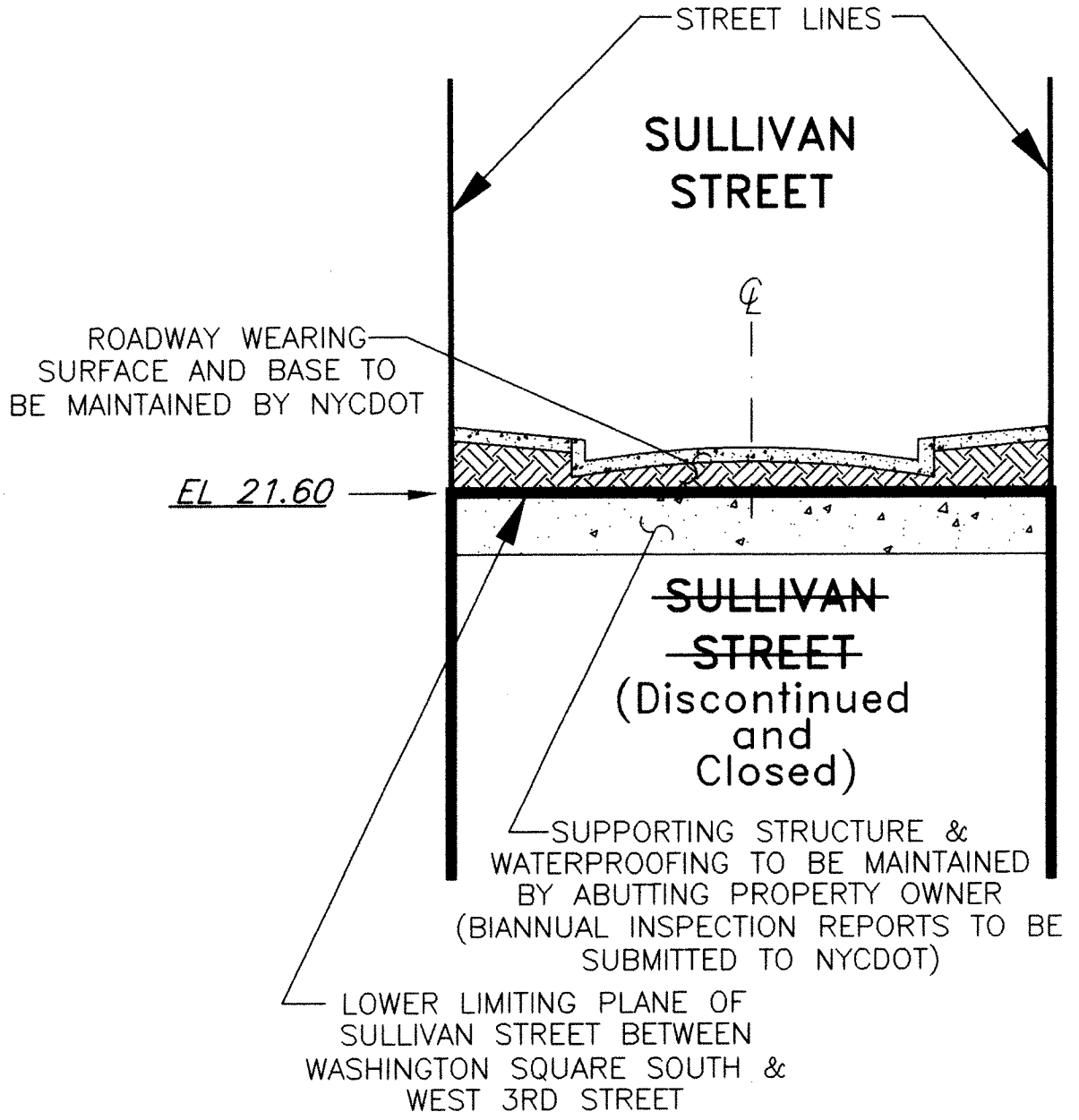
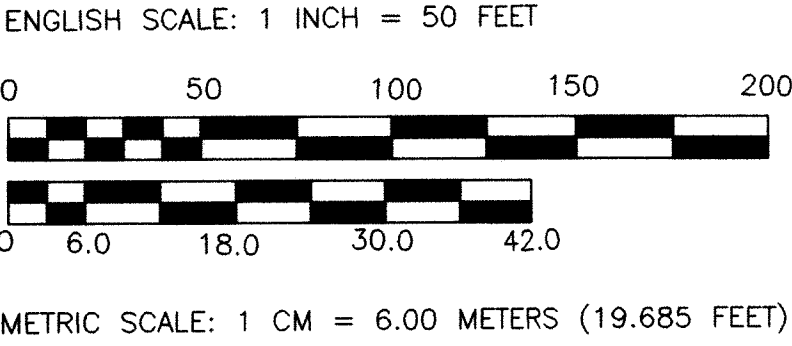
DATED: MAY 27, 1998

C. Virginia Fields
MANHATTAN BOROUGH PRESIDENT

Anthony C. Gulotta
ANTHONY C. GULOTTA, P.E.
CONSULTING ENGINEER



DISCONTINUANCE AND CLOSING MAP BELOW ELEV. 21.60



SECTION B-B LOOKING NORTH