

MAP (ACC. NO. 30209)

SHOWING A CHANGE IN THE CITY MAP BY
ESTABLISHING, ELIMINATING,
DISCONTINUING, AND CLOSING
VOLUMES OF

WEST 56th STREET

AND THE MODIFICATION OF GRADES
NECESSITATED THEREBY

ALL WITHIN THE AREA GENERALLY BOUNDED BY
12th AVENUE, WEST 55th STREET, WEST 57th STREET, & 11th AVENUE

DRAWING NUMBER 1 of 4

DATED : NEW YORK, March 5, 2001

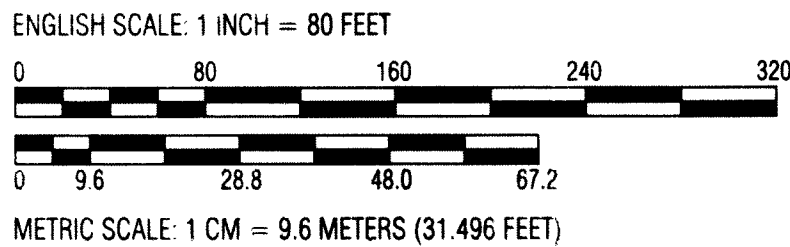
[Signature]
PRESIDENT OF THE BOROUGH OF MANHATTAN

[Signature]
CONSULTING ENGINEER

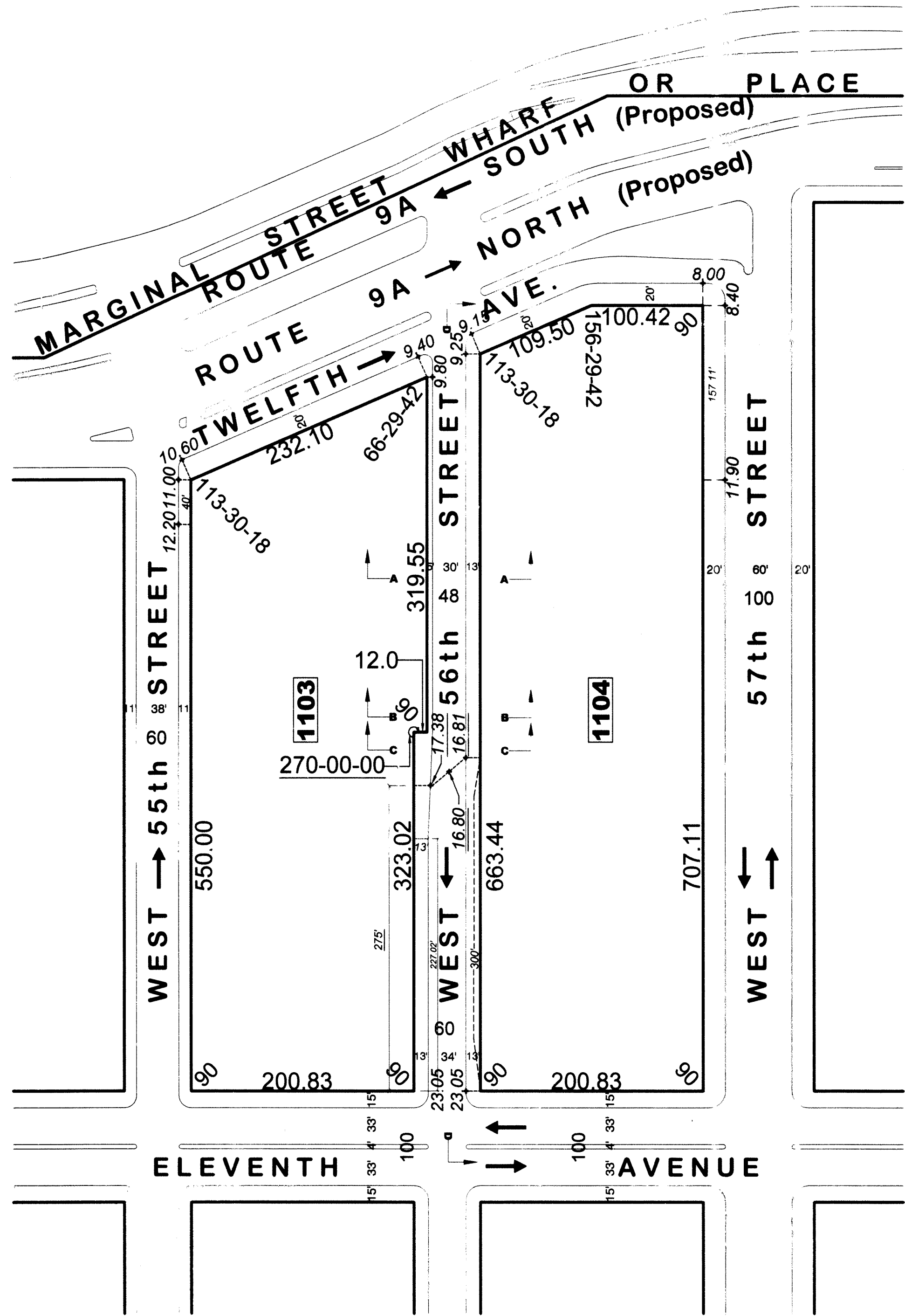
EXPLANATORY NOTES

- Indicates street line heretofore established and hereby retained
- Indicates street line hereby established
- Indicates street line heretofore established and hereby eliminated
- Indicates roadway and sidewalk treatment heretofore established and hereby retained
- Indicates dimension heretofore established and hereby retained
- Indicates dimension hereby established
- Indicates dimension heretofore established and hereby eliminated
- Indicates elevation heretofore established and hereby retained
- Indicates tie-in distance heretofore established and hereby retained
- Indicates tie-in distance hereby established
- Indicates street width
- Indicates roadway and sidewalk treatment dimension heretofore established and hereby retained
- Top of Pavement
- Indicates direction of traffic flow
- Indicates Manhattan Tax Block Number
- Indicates street to be discontinued and closed

Elevations on this map refer to datum
of borough of Manhattan, which is 2.75 feet
above the U.C.S. & G. Survey datum.



PREPARED BY:
City of New York Department of Sanitation
Support Operations Bureau of Engineering
Division of Special Projects - A. Neri (2/27/01)

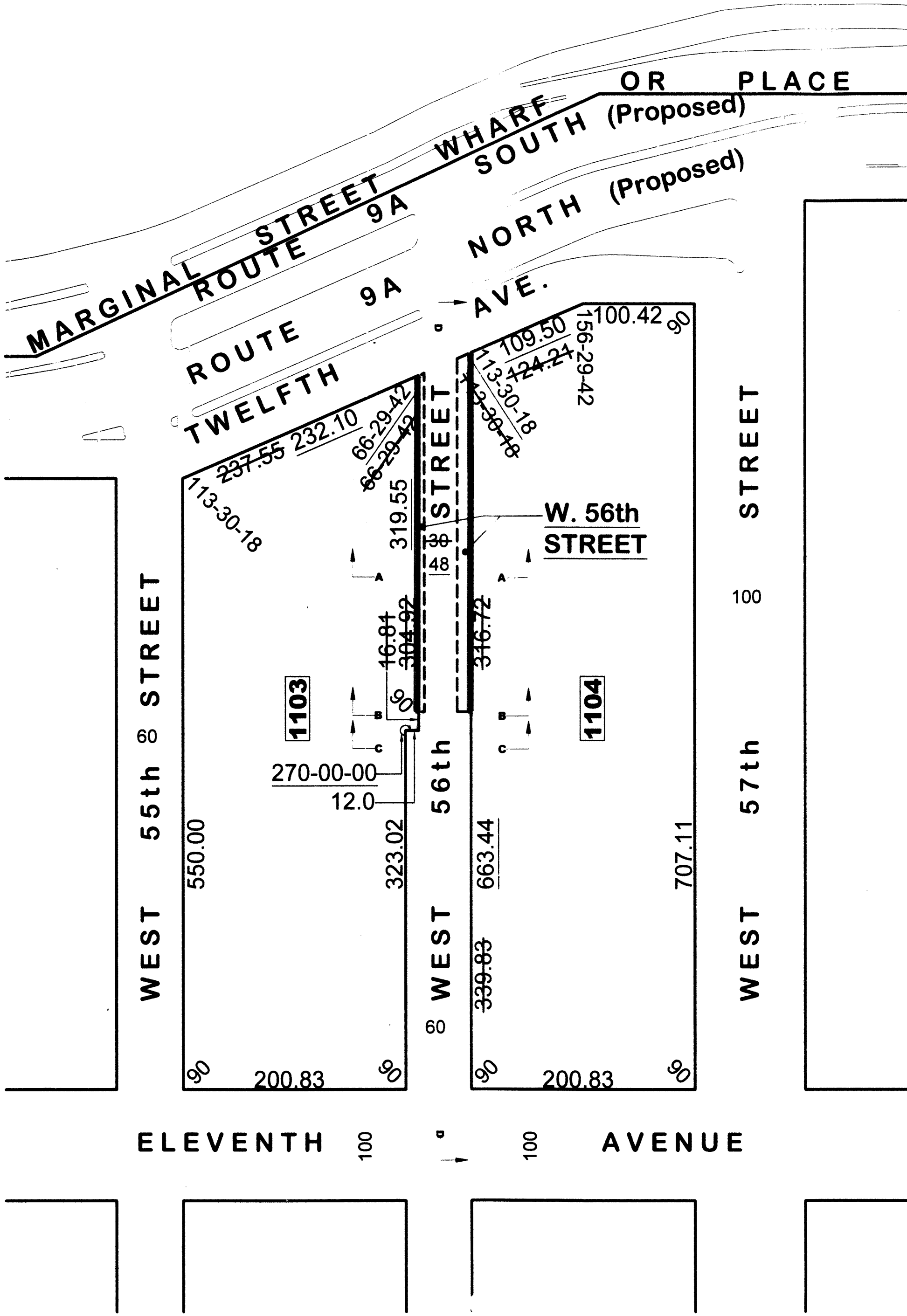
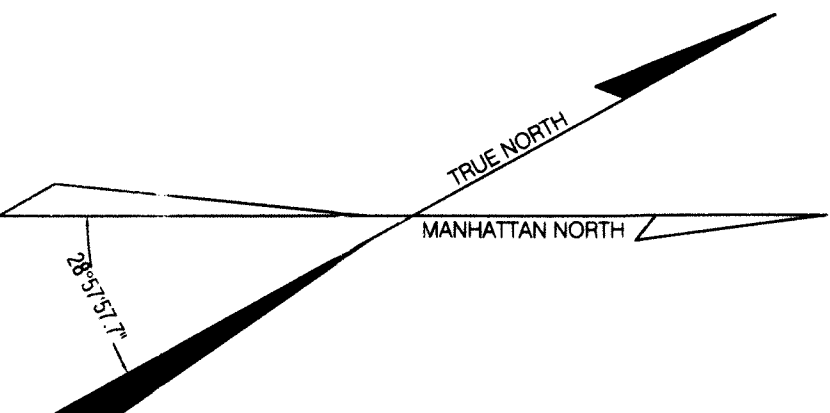


PLAN OF WEST 56th STREET AT GRADE LEVEL

Scale: 1" = 80'-00"

REFERENCE MAPS:

ACC. NO.	C.P.C. NO.	APPROVED BY BOARD OF ESTIMATE
ACC. NO. 27437	(C.P.C. J-852)	July 1, 1936
ACC. NO. 27933	Damage Map	
ACC. NO. 27174	(C.P.C. J-289)	August 1, 1934
ACC. NO. 27837	(C.P.C. J-2554)	March 22, 1939
ACC. NO. 28441	(C.P.C. 320)	June 20, 1940
ACC. NO. 28120	Damage Map	
ACC. NO. 26626	(C.P.C. H-12252)	June 19, 1931



PLAN OF WEST 56th STREET
BETWEEN +10.00 AND +14.00 ABOVE GRADE LEVEL

Scale: 1" = 80'-00"

I, ROSA R. ROMERO, SECRETARY OF THE CITY PLANNING COMMISSION, DO HEREBY
CERTIFY THAT THIS MAP IS ONE OF EIGHT SIMILAR MAPS APPROVED BY THE
CITY PLANNING COMMISSION ON THE 25TH DAY OF SEPTEMBER, 2001
(CALENDAR NO. 45), AND SUBSEQUENTLY APPROVED BY THE CITY COUNCIL
ON OCTOBER 31, 2001 (RES. NO. 2111) AND THAT THESE MAPS WERE FILED
ON THE DATE OF THIS CERTIFICATION AND WILL TAKE EFFECT ON THE FOLLOWING DAY.

DATE: NEW YORK, April 1, 2002

[Signature]
SECRETARY, CITY PLANNING COMMISSION

MAP (ACC. NO. 30209)

SHOWING A CHANGE IN THE CITY MAP BY
ESTABLISHING, ELIMINATING,
DISCONTINUING, AND CLOSING
VOLUMES OF


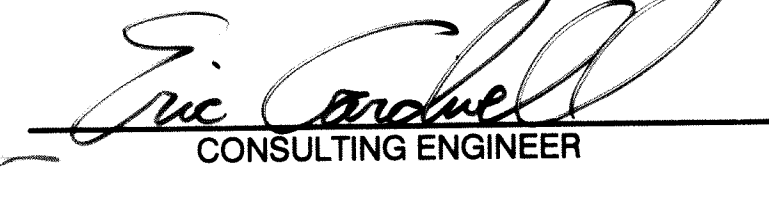
WEST 56th STREET

AND THE MODIFICATION OF GRADES
NECESSITATED THEREBY

ALL WITHIN THE AREA GENERALLY BOUNDED BY
12th AVENUE, WEST 55th STREET, WEST 57th STREET, & 11th AVENUE

DRAWING NUMBER 2 of 4

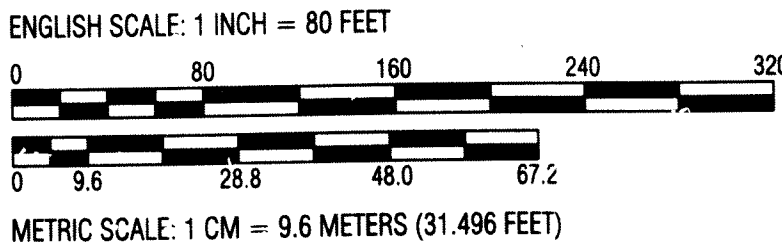
DATED : NEW YORK, March 5, 2001

 PRESIDENT OF THE BOROUGH OF MANHATTAN
 CONSULTING ENGINEER

EXPLANATORY NOTES

- Indicates street line heretofore established and hereby retained
- Indicates street line hereby established
- - - Indicates street line heretofore established and hereby eliminated
- Indicates roadway and sidewalk treatment heretofore established and hereby retained
- 105.42 Indicates dimension heretofore established and hereby retained
- 625.50 Indicates dimension hereby established
- ~~317.39~~ Indicates dimension heretofore established and hereby eliminated
- 23.8 Indicates elevation heretofore established and hereby retained
- 50' Indicates tie-in distance heretofore established and hereby retained
- 231.91' Indicates tie-in distance hereby established
- 60 Indicates street width
- 13' Indicates roadway and sidewalk treatment dimension heretofore established and hereby retained
- T.P. Top of Pavement
- Indicates direction of traffic flow
- 1104 Indicates Manhattan Tax Block Number
- W-56th St- (Discontinued and Closed) Indicates street to be discontinued and closed

Elevations on this map refer to datum of borough of Manhattan, which is 2.75 feet above the U.C.S. & G. Survey datum.



PREPARED BY:
City of New York, Department of Sanitation
Support Operations/Bureau of Engineering
Division of Special Projects - A. Kerr (2/27/01)

REFERENCE MAPS:

ACC. NO.	C.P.C. NO.
ACC. NO. 27437	(C.P.C. J-852)
ACC. NO. 27933	Damage Map
ACC. NO. 27174	(C.P.C. J-289)
ACC. NO. 27837	(C.P.C. J-2554)
ACC. NO. 28441	(C.P.C. 320)
ACC. NO. 28120	Damage Map
ACC. NO. 26626	(C.P.C. H-12252)

APPROVED BY BOARD OF ESTIMATE

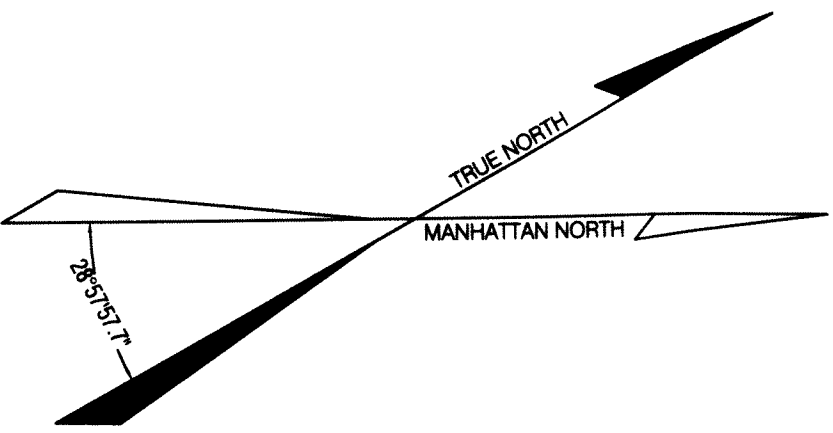
July 1, 1936
August 1, 1934
March 22, 1939
June 20, 1940
June 19, 1931

PLAN OF WEST 56th STREET
BETWEEN +14.00 AND +16.00 ABOVE GRADE LEVEL

Scale: 1" = 80'-00"

PLAN OF WEST 56th STREET
FROM +16.00 ABOVE GRADE LEVEL CONTINUING UPWARD TO ELEV. +105.00

Scale: 1" = 80'-00"



MAP (ACC. NO. 30209)

SHOWING A CHANGE IN THE CITY MAP BY
ESTABLISHING, ELIMINATING,
DISCONTINUING, AND CLOSING
VOLUMES OF

WEST 56th STREET

AND THE MODIFICATION OF GRADES
NECESSITATED THEREBY

ALL WITHIN THE AREA GENERALLY BOUNDED BY
12th AVENUE, WEST 55th STREET, WEST 57th STREET, & 11th AVENUE






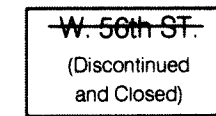
DRAWING NUMBER 3 of 4

DATED : NEW YORK, March 5, 2001

Nigam J. Felder
PRESIDENT OF THE BOROUGH OF MANHATTAN

Eric Corbelle
CONSULTING ENGINEER

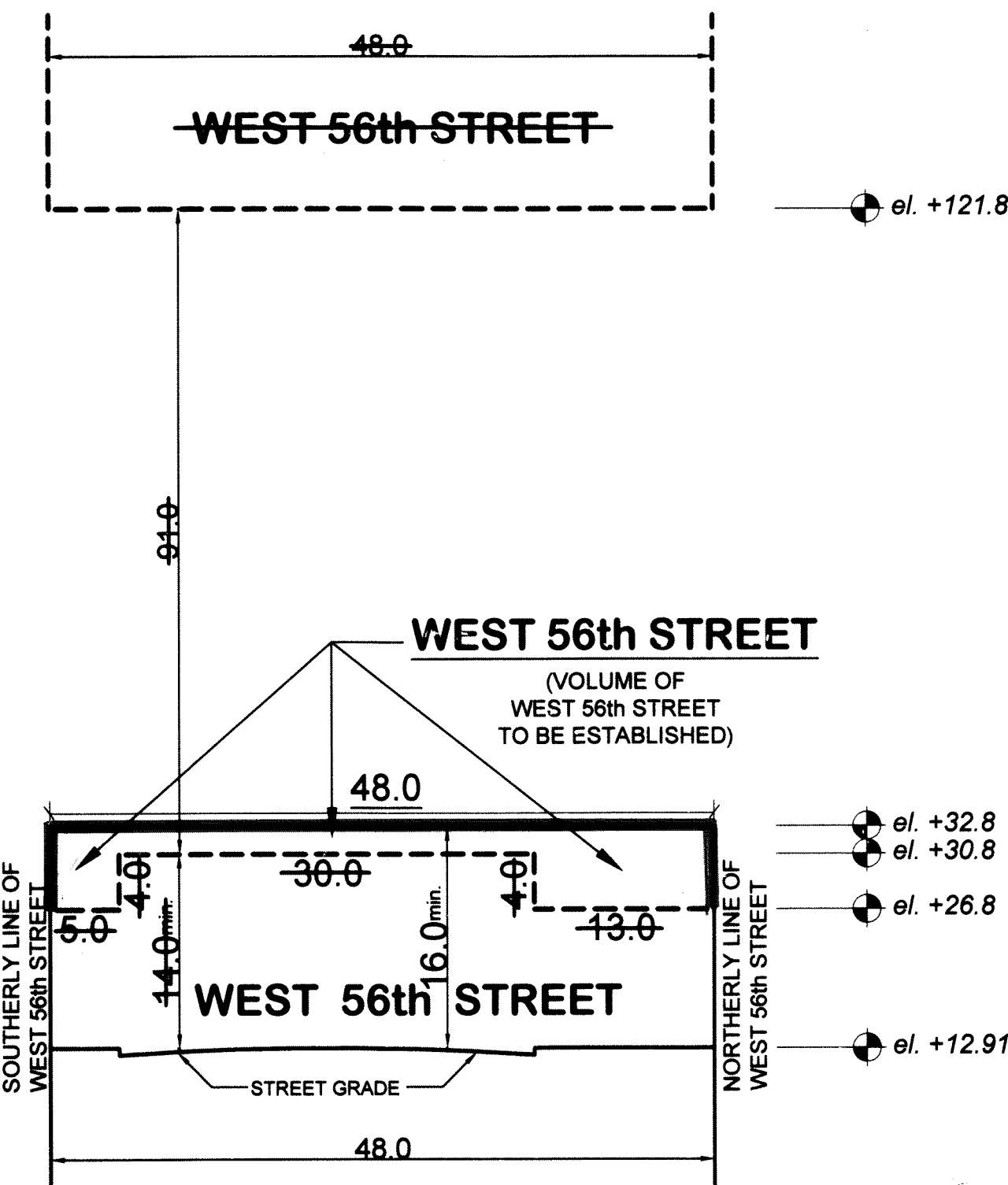
EXPLANATORY NOTES

-  Indicates street line heretofore established and hereby retained
-  Indicates street line hereby established
-  Indicates street line heretofore established and hereby eliminated
-  Indicates roadway and sidewalk treatment heretofore established and hereby retained
- 105.42** Indicates dimension heretofore established and hereby retained
- 625.50** Indicates dimension hereby established
- ~~**317.39**~~ Indicates dimension heretofore established and hereby eliminated
- 23.8** Indicates elevation heretofore established and hereby retained
- 50'** Indicates tie-in distance heretofore established and hereby retained
- 231.91'** Indicates tie-in distance hereby established
- 60** Indicates street width
- 13'** Indicates roadway and sidewalk treatment dimension heretofore established and hereby retained
- T.P.** Top of Pavement
-  Indicates direction of traffic flow
- 1104** Indicates Manhattan Tax Block Number
-  Indicates street to be discontinued and closed

Elevations on this map refer to datum
of borough of Manhattan, which is 2.75 feet
above the U.C.S. & G. Survey datum.

REFERENCE MAPS:

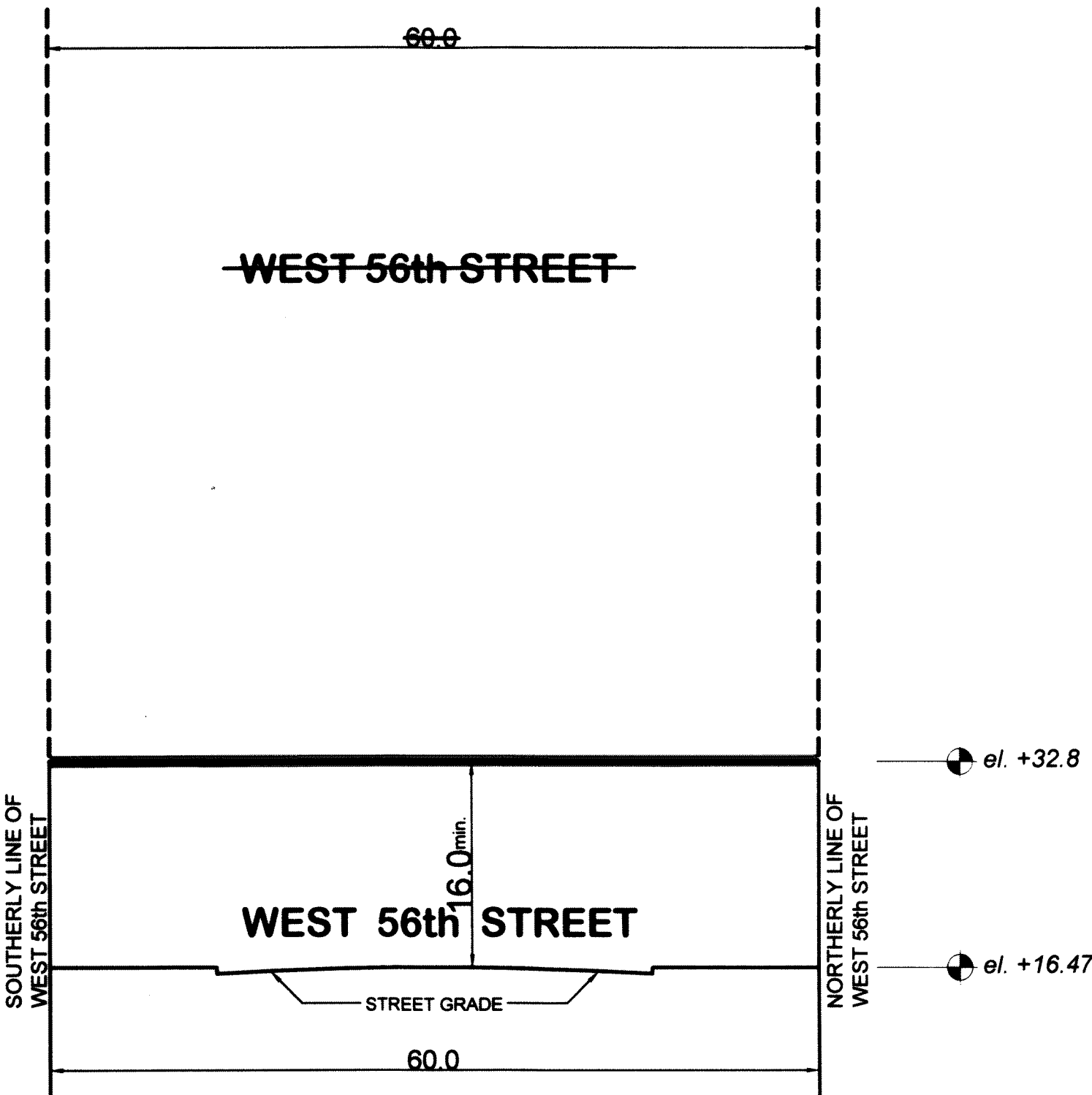
ACC. NO.	C.P.C. NO.	APPROVED BY BOARD OF ESTIMATE
ACC. NO. 27437	(C.P.C. J-852)	July 1, 1936
ACC. NO. 27933	Damage Map	
ACC. NO. 27174	(C.P.C. J-289)	August 1, 1934
ACC. NO. 27837	(C.P.C. J-2554)	March 22, 1939
ACC. NO. 28441	(C.P.C. 320)	June 20, 1940
ACC. NO. 28120	Damage Map	
ACC. NO. 26626	(C.P.C. H-12252)	June 19, 1931



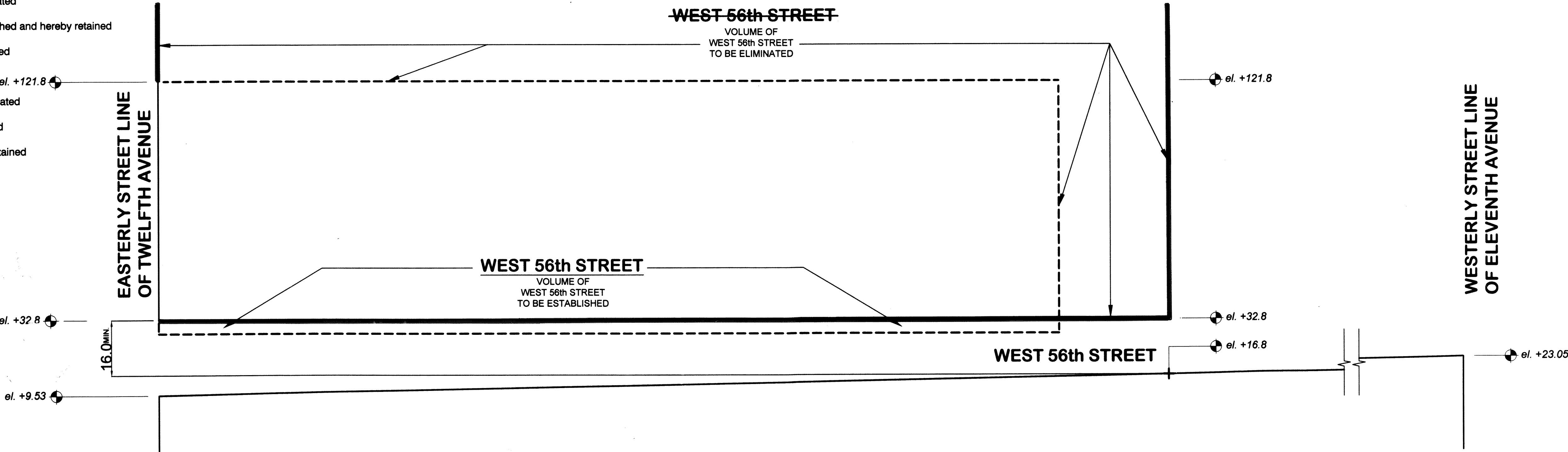
SECTION A-A
Not to Scale



SECTION B-B
Not to Scale



SECTION C-C
Not to Scale



SECTION D-D
Not to Scale

PREPARED BY:
City of New York, Department of Sanitation
Support Operations/Bureau of Engineering
Division of Special Projects - A. Kerr (2/27/01)

CITY OF NEW YORK
OFFICE OF THE PRESIDENT BOROUGH OF MANHATTAN

MAP (ACC. NO. 30209)

SHOWING A CHANGE IN THE CITY MAP BY
ESTABLISHING, ELIMINATING,
DISCONTINUING, AND CLOSING
VOLUMES OF

WEST 56th STREET

AND THE MODIFICATION OF GRADES
NECESSITATED THEREBY

ALL WITHIN THE AREA GENERALLY BOUNDED BY
12th AVENUE, WEST 55th STREET, WEST 57th STREET, & 11th AVENUE

DRAWING NUMBER 4 of 4

DATED : NEW YORK, March 5, 2001

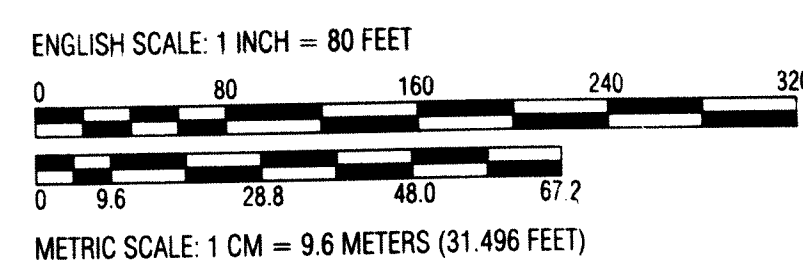
[Signature]
PRESIDENT OF THE BOROUGH OF MANHATTAN

[Signature]
CONSULTING ENGINEER

EXPLANATORY NOTES

- Indicates street line heretofore established and hereby retained
- Indicates street line hereby established
- Indicates street line heretofore established and hereby eliminated
- Indicates roadway and sidewalk treatment heretofore established and hereby retained
- Indicates dimension heretofore established and hereby retained
- Indicates dimension hereby established
- Indicates dimension heretofore established and hereby eliminated
- Indicates elevation heretofore established and hereby retained
- Indicates tie-in distance heretofore established and hereby retained
- Indicates tie-in distance hereby established
- Indicates street width
- Indicates roadway and sidewalk treatment dimension heretofore established and hereby retained
- Top of Pavement
- Indicates direction of traffic flow
- Indicates Manhattan Tax Block Number
- Indicates street to be discontinued and closed

Elevations on this map refer to datum
of borough of Manhattan, which is 2.75 feet
above the U.C.S. & G. Survey datum.



PREPARED BY:
City of New York, Department of Sanitation
Support Operations/Bureau of Engineering
Division of Special Projects - A. Kerz (2/27/01)

DISCONTINUING & CLOSING PLAN OF WEST 56th STREET

Scale: 1'-00" = 80'-00"

REFERENCE MAPS:

ACC. NO.
ACC. NO. 27437
ACC. NO. 27933
ACC. NO. 27174
ACC. NO. 27837
ACC. NO. 28441
ACC. NO. 28120
ACC. NO. 26626

C.P.C. NO.
(C.P.C. J-852)
Damage Map
(C.P.C. J-289)
(C.P.C. J-2554)
(C.P.C. 320)
Damage Map
(C.P.C. H-26626)

APPROVED BY BOARD OF ESTIMATE

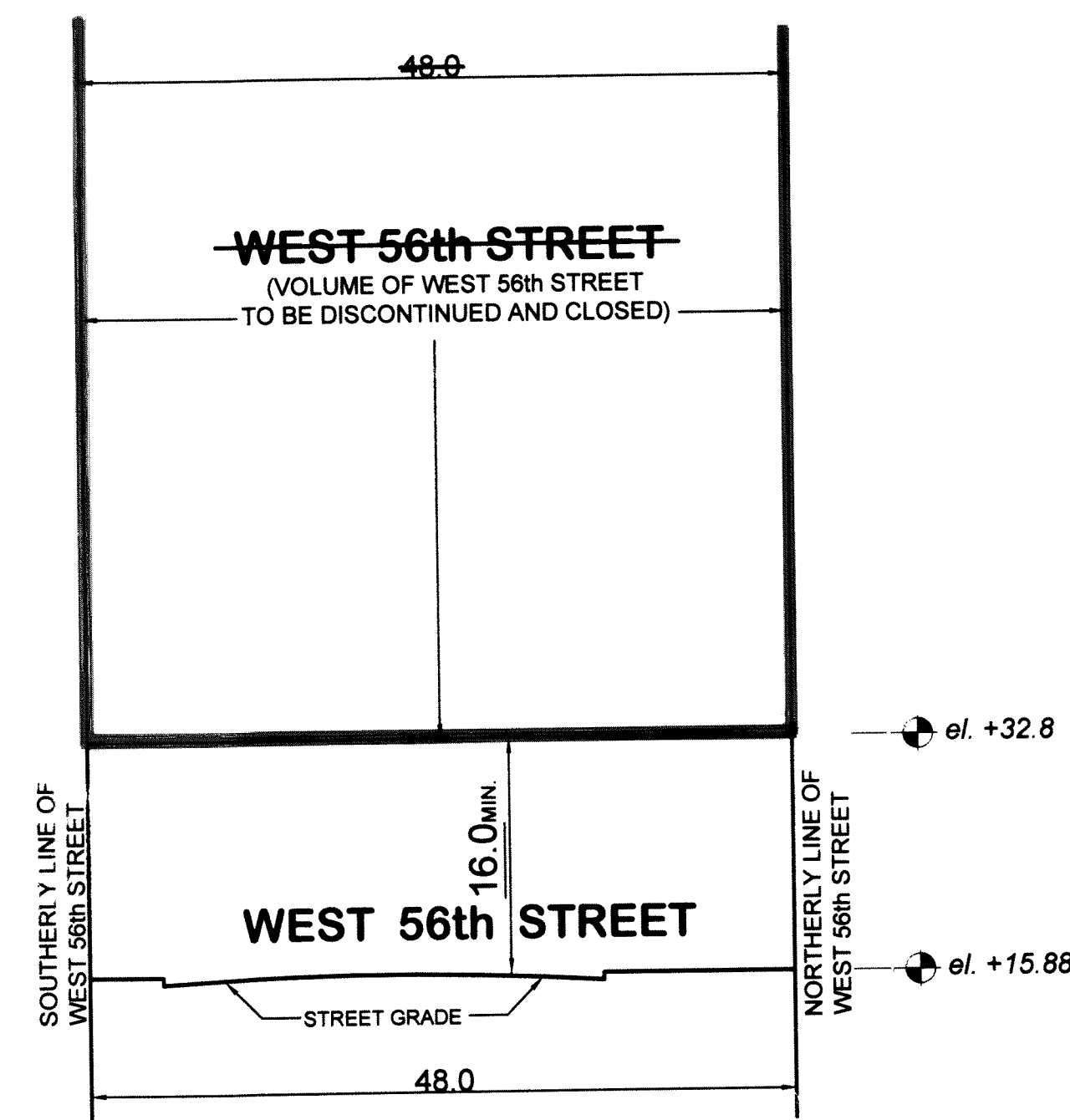
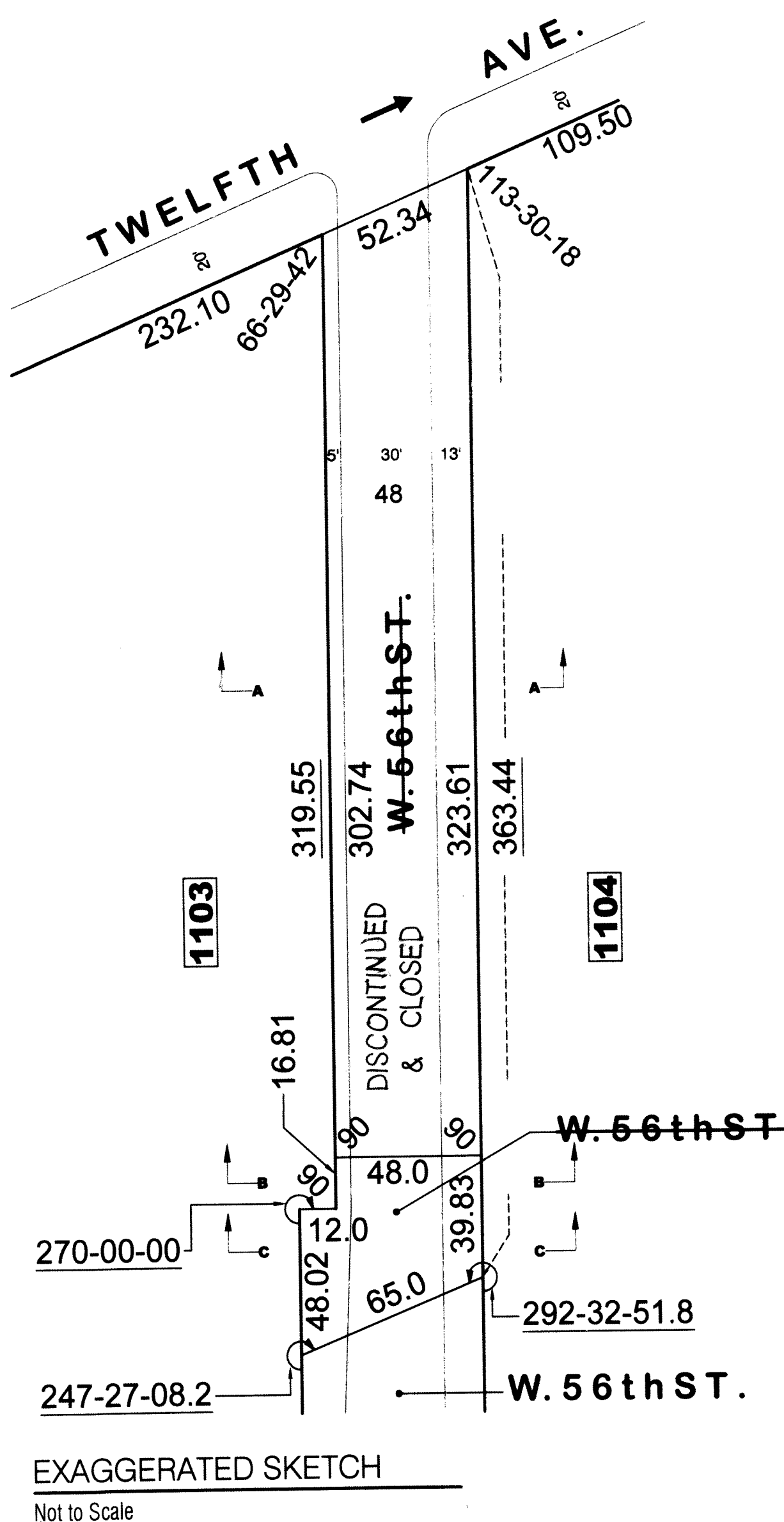
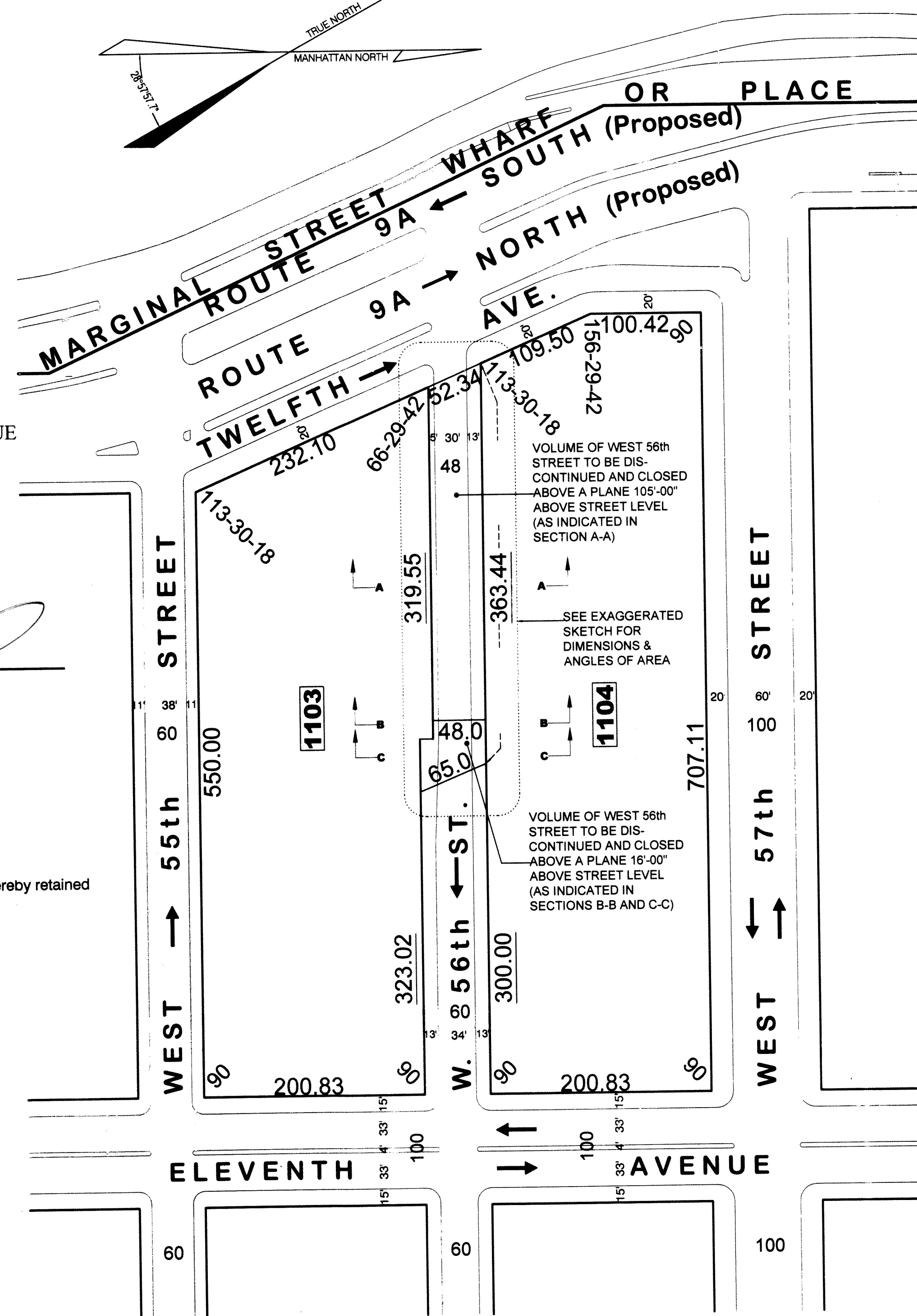
July 1, 1936

August 1, 1934

March 22, 1939

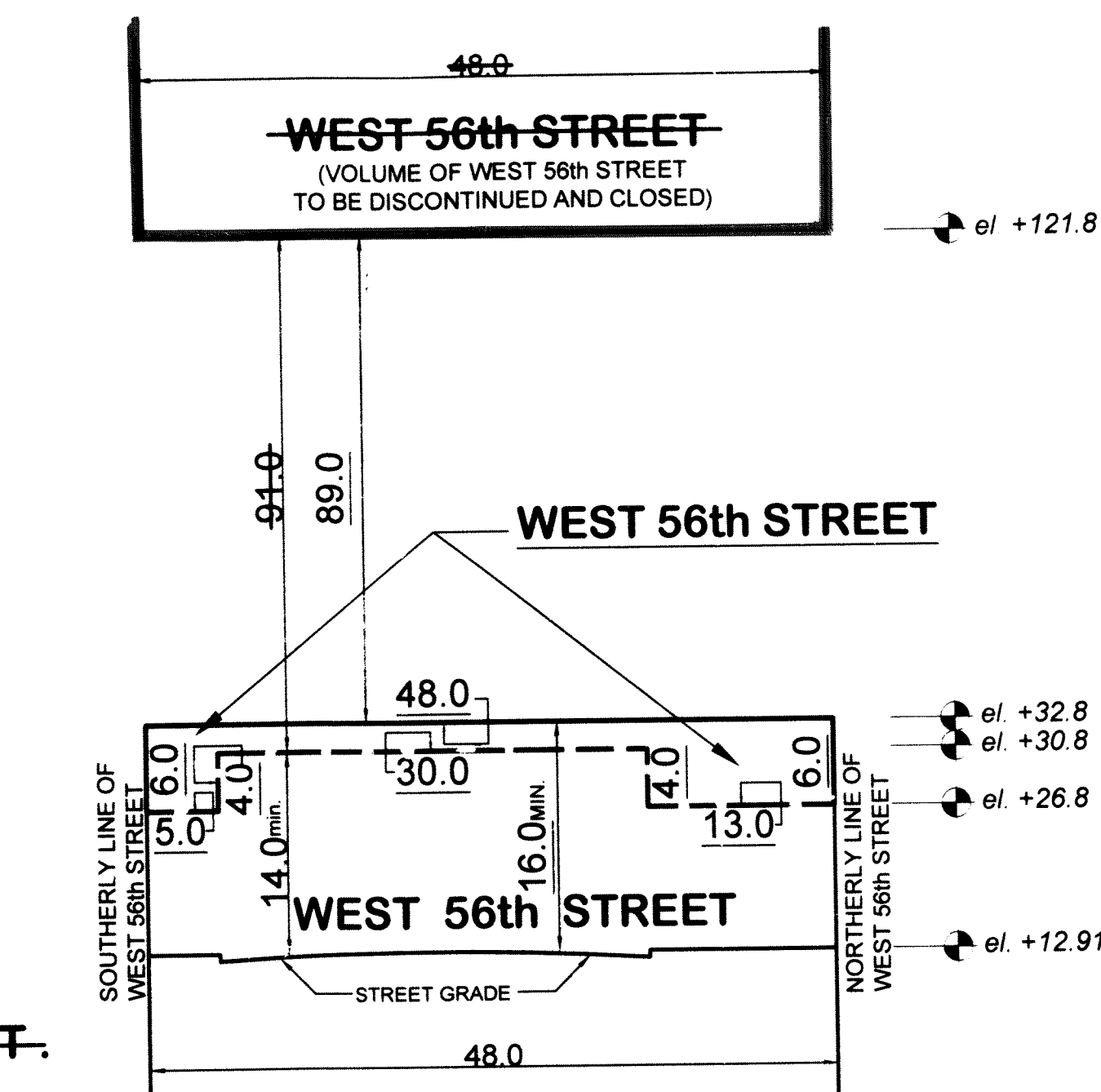
June 20, 1940

June 19, 1931



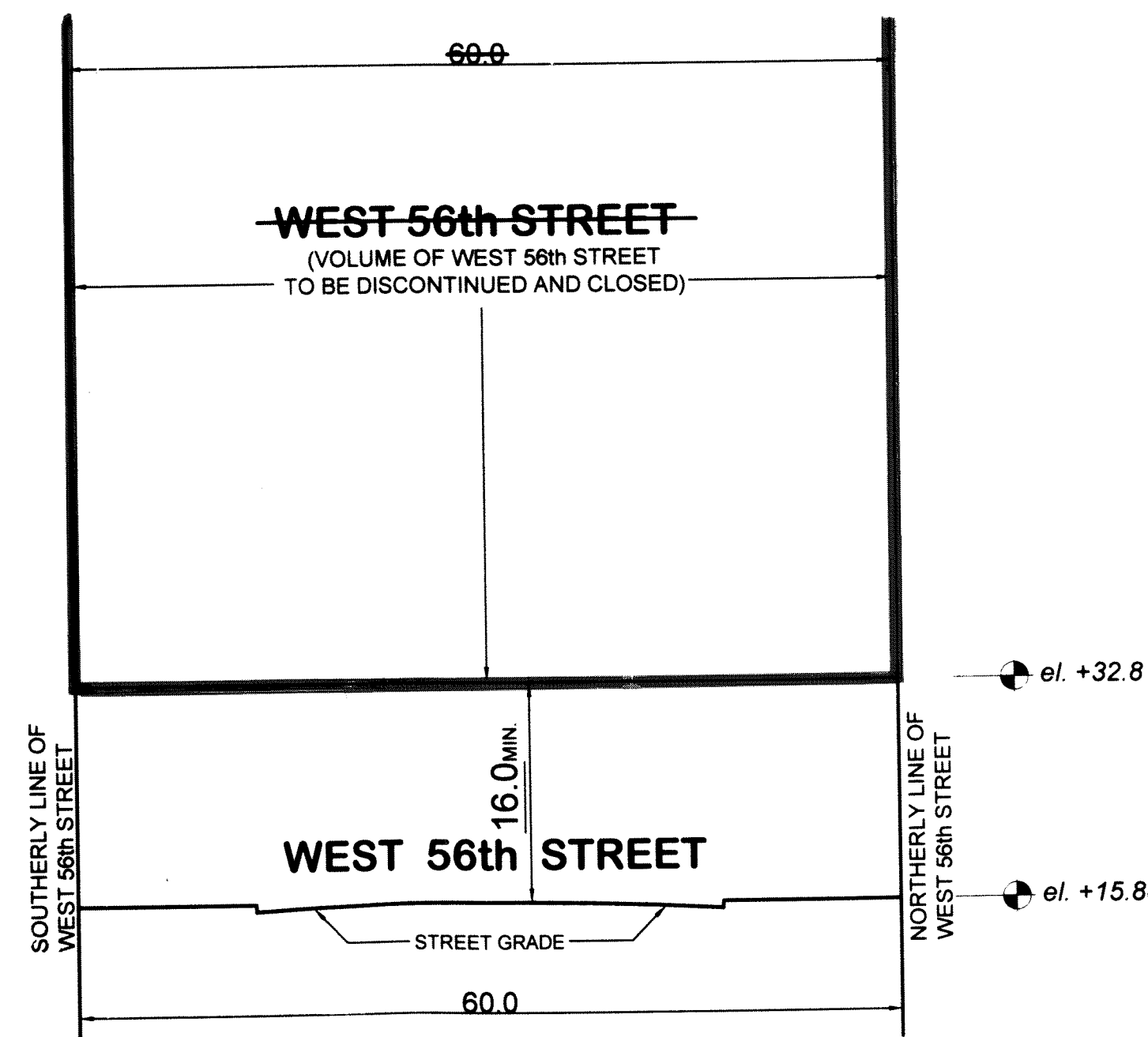
DISCONTINUING & CLOSING SECTION B-B

Not to Scale



DISCONTINUING & CLOSING SECTION A-A

Not to Scale



DISCONTINUING & CLOSING SECTION C-C

Not to Scale